

## PDL1 MAB (DURVALUMAB)

货号: 28145

产品全名: PDL1 (Durvalumab) 单抗

基因符号 PD-L1;CD274;B7-H1;PDCD1L1;PDCD1LG1

描述: PDL1 (durvalumab) 单抗

背景: Research grade biosimilar. Not for use in therapeutic or diagnostic procedures for humans or animals.

经过测试的应用: Flow Cyt

推荐稀释比: Flow Cyt 1:100

种属反应性: Humanized

亚型: IgG1(K97R, L117F, L118E, P214S)

纯化: Purified from cell culture supernatant by affinity chromatography

种属反应性: 人 PDL1

成分: Lyophilized from sterile PBS, pH 7.4. 5% – 8% trehalose is added as protectants before lyophilization.

储存和运输: Store at  $-20^{\circ}\text{C}$  to  $-80^{\circ}\text{C}$  for 12 months in lyophilized form. After reconstitution, if not intended for use within a month, aliquot and store at  $-80^{\circ}\text{C}$  (Avoid repeated freezing and thawing).

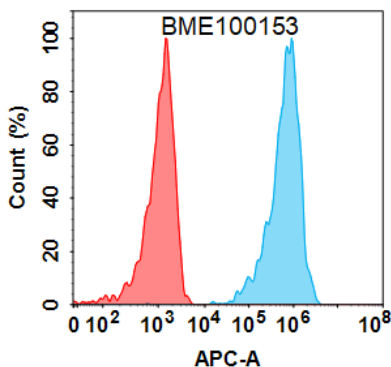


Figure 1. Flow cytometry analysis with  $1\ \mu\text{g}/\text{mL}$  Anti-PDL1(durvalumab biosimilar) mAb (28145) on Expi293 cells transfected with Human PDL1 protein (Blue histogram) or Expi293 transfected with irrelevant protein (Red histogram).

### Anti-PDL1 (durvalumab biosimilar) mAb ELISA

$0.2\ \mu\text{g}$  of Human PDL1, mFc-His tagged protein per well

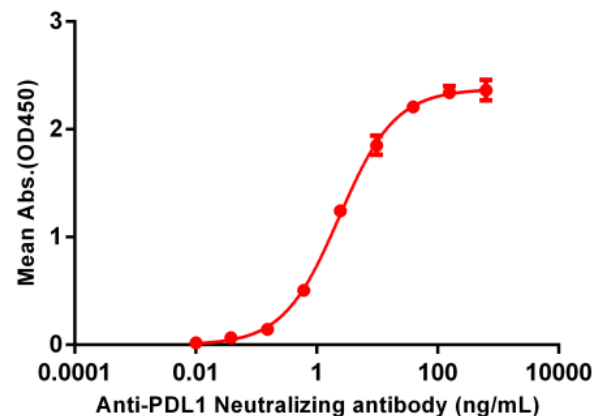


Figure 2. ELISA plate pre-coated by  $2\ \mu\text{g}/\text{ml}$  ( $100\ \mu\text{l}/\text{well}$ ) Human PDL1, mFc-His tagged protein 11151 can bind Anti-PDL1 (durvalumab biosimilar) Neutralizing antibody (28145) in a linear range of  $0.61\text{--}9.77\ \text{ng}/\text{ml}$ .