

CTNNB1(G34E)

产品名称: CTNNB1(G34E)

货号: 26300

基因符号: Beta-catenin, CTNNB, Catenin beta-1

描述: CTNNB1(G34E) 小鼠单抗

背景: CTNNB1 protein is a dual function protein. It is a subunit of a complex of proteins that form adherent junctions, which are important for the establishment and maintenance of epithelial cell layers by regulating cell growth and adhesion between adjacent cells. CTNNB1 protein also pulls double duty as an intracellular signal transducer in the Wnt signaling pathway. Mutations of CTNNB1 have been implicated in the pathogenesis of several cancers.

免疫原: A synthetic peptide from the internal region of CTNNB1 which includes the mutation of G34E, human origin.

经过测试的应用: ELISA, WB, IHC

推荐稀释比: ELISA: 1:1000-1:2000WB: 1:500-1:1000IHC: 1:50-1:100

Concentration: 0.5 mg/ml

种属反应性: Mouse

形式: Liquid

克隆性: Monoclonal

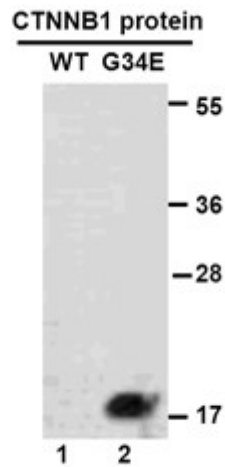
亚型: IgG

纯化: Purified from ascites

成分: PBS (without Mg²⁺ and Ca²⁺), pH 7.4, 150 mM NaCl, 50% glycerol

种属反应性: Recognizes G34E mutant, but not wild type CTNNB1 of vertebrates.

储存条件: Store at -20°C. Avoid repeated freezing and thawing



蛋白质印迹: WB: anti-CTNNB1 (G34E) mAb **Western blot analysis of recombinant CTNNB1(G34E) and wild type proteins.** Purified His-tagged CTNNB1(G34E) protein (lane2) and corresponding wild type protein (lane1) were blotted with Anti-CTNNB1(G34E) monoclonal antibody (货号:26300). **Immunofluorescence:** **Immunofluorescence of cells expressing CTNNB1 proteins with Anti-CTNNB1(G34E) antibody.** HEK293T cells were transfected with pCDNA3-GFP-CTNNB1 (WT) plasmid (left column) or pCDNA3-GFP-CTNNB1(G34E) plasmid (right column), then fixed and stained with Anti-CTNNB1(G34E) monoclonal antibody (货号:26300).

