

## CRTAM (DMC673) IGG1 CHIMERIC MAB

货号: 28274

产品全名: CRTAM(DMC673) IgG1 Chimeric 单抗

基因符号 CD355

描述: CRTAM antibody(DMC673) IgG1 Chimeric 单抗

背景: The CRTAM gene is upregulated in CD4 (see MIM 186940)-positive and CD8 (see CD8A; MIM 186910)-positive T cells and encodes a type I transmembrane protein with V and C1-like Ig domains (Yeh et al.; 2008 [PubMed 18329370]).[supplied by OMIM; Feb 2009]

经过测试的应用: Flow Cyt

推荐稀释比: Flow Cyt 1:100

种属反应性: Rabbit

亚型: Rabbit:Human Fc chimeric IgG1

纯化: Purified from cell culture supernatant by affinity chromatography

种属反应性: 人 CRTAM

成分: Lyophilized from sterile PBS, pH 7.4. 5% - 8% trehalose is added as protectants before lyophilization.

储存和运输: Store at -20°C to -80°C for 12 months in lyophilized form.

After reconstitution, if not intended for use within a month, aliquot and store at -80°C (Avoid repeated freezing and thawing).

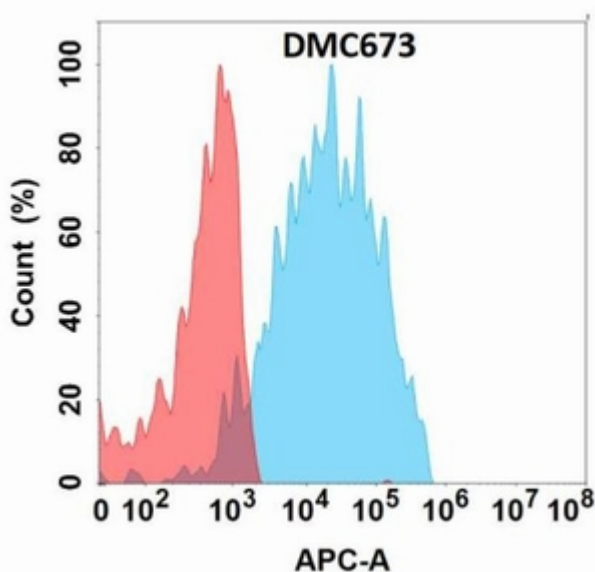


Figure 1. Flow cytometry analysis with Anti-CRTAM(DMC673) on Expi293 cells transfected with human CRTAM(Blue histogram) or Expi293 transfected with irrelevant protein (Red histogram).



# Product Description

Pioneering GTPase and Oncogene Product Development since 2010

---