

SELP MAB (CRIZANLIZUMAB)

货号: 28080

产品全名: SELP(Crizanlizumab) 单抗

基因符号 P-Selectin;D62P;ELP;MP-140

描述: SELP(crizanlizumab) 单抗

背景: Research grade biosimilar. Not for use in therapeutic or diagnostic procedures for humans or animals.

经过测试的应用: Flow Cyt

推荐稀释比: Flow Cyt 1:100

种属反应性: Humanized

亚型: IgG2

纯化: Purified from cell culture supernatant by affinity chromatography

种属反应性: 人 SELP

成分: Lyophilized from sterile PBS, pH 7.4. 5 % – 8% trehalose is added as protectants before lyophilization.

储存和运输: Store at -20°C to -80°C for 12 months in lyophilized form.

After reconstitution, if not intended for use within a month, aliquot and store at -80°C (Avoid repeated freezing and thawing).

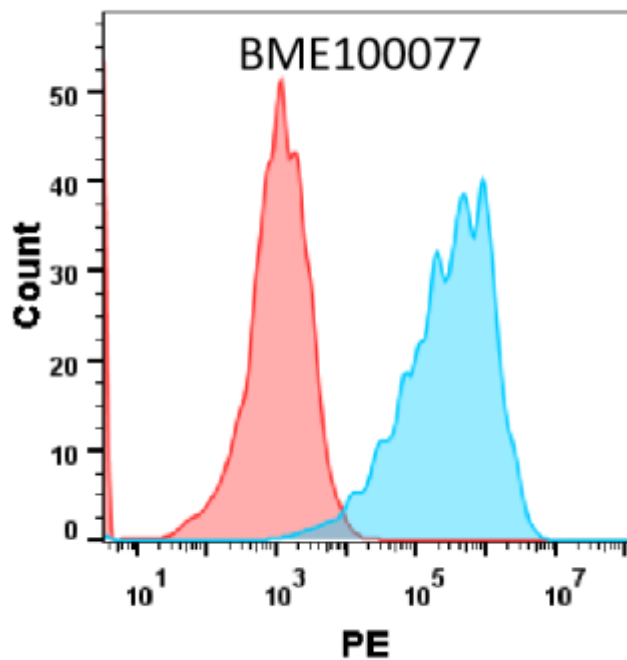


Figure 1. HEK293 cell line transfected with irrelevant protein (red histogram) and human SELP protein (blue histogram) were surface stained with Anti-SELP (crizanlizumab biosimilar) mAb $1\mu\text{g}/\text{ml}$ followed by PE-conjugated Goat anti-Human IgG secondary antibody.