

HUMAN CMTM6 FULL LENGTH PROTEIN

货号: 11039

产品全名: 人 CMTM6 Full Length 蛋白

规格: 10/50/100 µg

基因符号 CKLFSF6; PRO2219

目标蛋白: CMTM6

UNIPROT ID: Q9NX76

描述: 人 CMTM6 full length protein-synthetic nanodisc

背景: This gene belongs to the chemokine-like factor gene superfamily, a novel family that is similar to the chemokine and transmembrane 4 superfamilies. This gene is one of several chemokine-like factor genes located in a cluster on chromosome 3. This gene is widely expressed in many tissues, but the exact function of the encoded protein is unknown. [provided by RefSeq, Jul 2008]

物种/宿主: HEK293

分子量: The human full length CMTM6 protein has a MW of 20.4 kDa

Formulation & Reconstitution: Lyophilized from nanodisc solubilization buffer (20 mM Tris-HCl, 150 mM NaCl, pH 8.0). Normally 5% – 8% trehalose is added as protectants before lyophilization.

储存和运输: Store at -20°C to -80°C for 12 months in lyophilized form. After reconstitution, if not intended for use within a month, aliquot and store at -80°C (Avoid repeated freezing and thawing). Lyophilized proteins are shipped at ambient temperature.

ELISA assay to evaluate CMTM6-Nanodisc
0.2µg Human CMTM6-Nanodisc per well

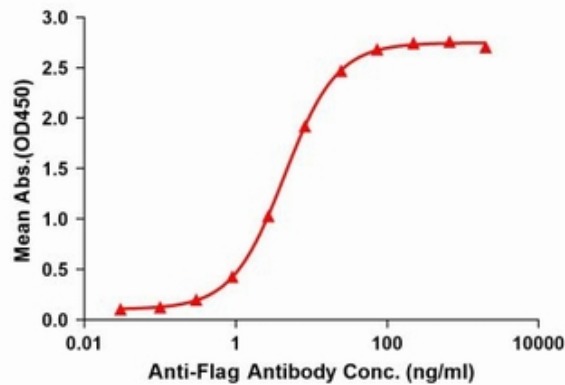


Figure1. Elisa plates were pre-coated with Flag Tag CMTM6-Nanodisc (0.2 µg/per well). Serial diluted anti-Flag monoclonal antibody solutions were added, washed, and incubated with secondary antibody before Elisa reading. From above data, the EC50 for anti-Flag monoclonal antibody binding with CMTM6-Nanodisc is 4.393ng/ml.

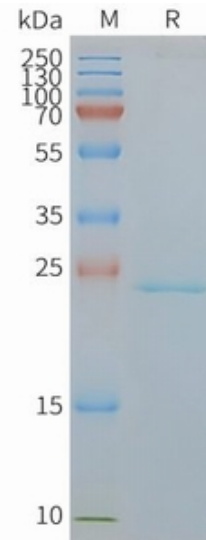


Figure2. Human CMTM6-Nanodisc, Flag Tag on SDS-PAGE