

## HUMAN CLDN2 FULL LENGTH PROTEIN

货号: 11063

产品全名: 人 CLDN2 Full Length 蛋白

规格: 10/50/100  $\mu$ g

基因符号 OAZON

目标蛋白: CLDN2

**UNIPROT ID:** P57739

**描述:** 人 CLDN2 full length protein-synthetic nanodisc

**背景:** This protein belongs to the claudin protein family whose members have been identified as major integral membrane proteins localized exclusively at tight junctions. Claudins are expressed in an organ-specific manner and regulate tissue-specific physiologic properties of tight junctions. This protein is expressed in the intestine. Alternatively spliced transcript variants with different 5' untranslated region have been found for this gene.

**物种/宿主:** HEK293

**分子量:** The human full length CLDN2 protein has a MW of 24.5 kDa

**Formulation & Reconstitution:** Lyophilized from nanodisc solubilization buffer (20 mM Tris-HCl, 150 mM NaCl, pH 8.0). Normally 5% – 8% trehalose is added as protectants before lyophilization.

**储存和运输:** Store at  $-20^{\circ}\text{C}$  to  $-80^{\circ}\text{C}$  for 12 months in lyophilized form. After reconstitution, if not intended for use within a month, aliquot and store at  $-80^{\circ}\text{C}$  (Avoid repeated freezing and thawing). Lyophilized proteins are shipped at ambient temperature.

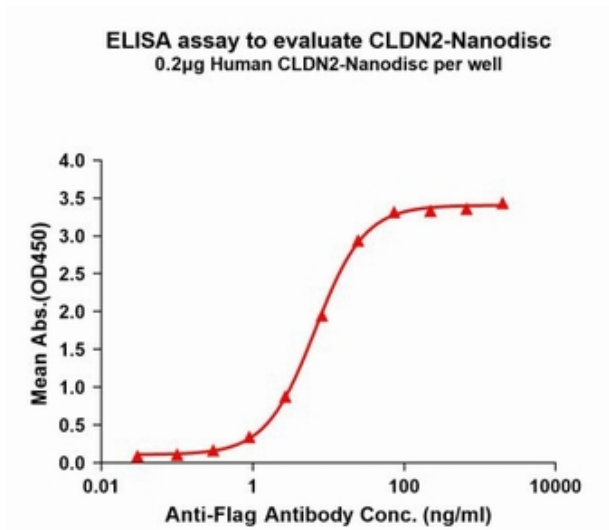


Figure1. Elisa plates were pre-coated with Flag Tag CLDN2-Nanodisc (0.2 µg/per well). Serial diluted anti-Flag monoclonal antibody solutions were added, washed, and incubated with secondary antibody before Elisa reading. From above data, the EC50 for anti-Flag monoclonal antibody binding with CLDN2-Nanodisc is 6.681ng/ml.

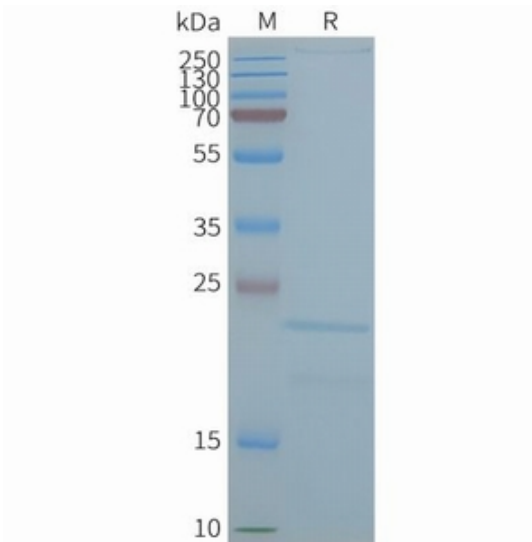


Figure2. Human CLDN2-Nanodisc, Flag Tag on SDS-PAGE