

CLDN18.2 (DM179) RABBIT MAB

货号: 28522

产品全名: CLDN18.2(DM179) 兔单克隆抗体

基因符号 Claudin 18.2

描述: CLDN18.2 antibody(DM179) 兔单克隆抗体

背景: CLDN18 belongs to the large claudin family of proteins; which form tight junction strands in epithelial cells.

经过测试的应用: ELISA; Flow Cyt

推荐稀释比: ELISA 1:5000-10000; Flow Cyt 1:100

种属反应性: Rabbit

亚型: Rabbit IgG

纯化: Purified from cell culture supernatant by affinity chromatography

种属反应性: 人 CLDN18.2

成分: Lyophilized from sterile PBS, pH 7.4. 5 % – 8% trehalose is added as protectants before lyophilization.

储存和运输: Store at -20°C to -80°C for 12 months in lyophilized form. After reconstitution, if not intended for use within a month, aliquot and store at -80°C (Avoid repeated freezing and thawing).

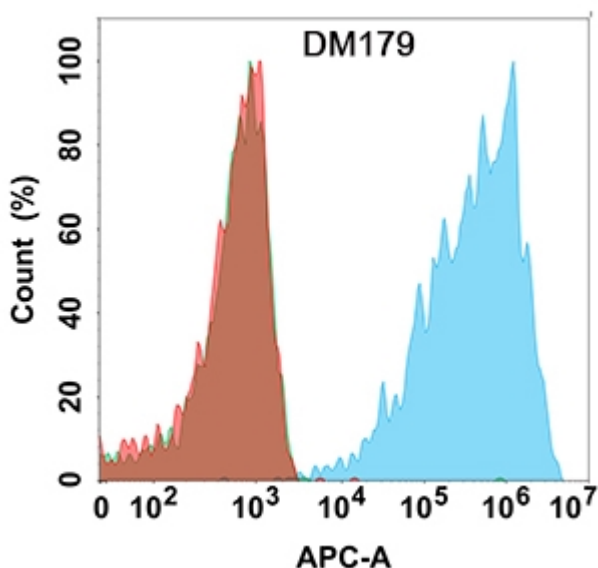


Figure 1. Flow cytometry analysis with Anti-CLDN18.2 (DM179) on Expi293 cells transfected with human CLDN18.2 (Blue histogram) or Expi293 transfected with human CLDN18.1 (Green histogram) or Expi293 transfected with irrelevant protein (Red histogram).



Product Description

Pioneering GTPase and Oncogene Product Development since 2010
