

CEACAM5 (DM122) RABBIT MAB

货号: 28467

产品全名: CEACAM5(DM122) 兔单克隆抗体

基因符号 CEACAM-5;CD66e;CEA;Meconium antigen 100

描述: CEACAM5 antibody(DM122) 兔单克隆抗体

背景: This gene encodes a cell surface glycoprotein that represents the founding member of the carcinoembryonic antigen (CEA) family of proteins. The encoded protein is used as a clinical biomarker for gastrointestinal cancers and may promote tumor development through its role as a cell adhesion molecule. Additionally; the encoded protein may regulate differentiation; apoptosis; and cell polarity. This gene is present in a CEA family gene cluster on chromosome 19. Alternative splicing results in multiple transcript variants.

经过测试的应用: ELISA; Flow Cyt

推荐稀释比: ELISA 1:5000-10000; Flow Cyt 1:100

种属反应性: Rabbit

亚型: Rabbit IgG

纯化: Purified from cell culture supernatant by affinity chromatography

种属反应性: 人 CEACAM5

成分: Lyophilized from sterile PBS, pH 7.4. 5% - 8% trehalose is added as protectants before lyophilization.

储存和运输: Store at -20°C to -80°C for 12 months in lyophilized form. After reconstitution, if not intended for use within a month, aliquot and store at -80°C (Avoid repeated freezing and thawing).

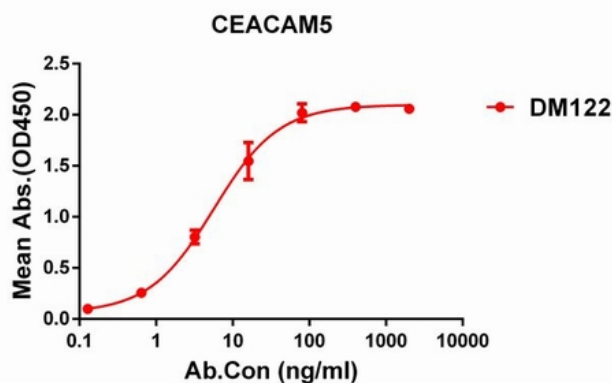


Figure 1. ELISA plate pre-coated by 1 µg/ml (100 µl/well) Human CEACAM5 protein, His tagged protein 11194 can bind Rabbit anti-CEACAM5 monoclonal antibody (clone: DM122) in a linear range of 0.1-50 ng/ml.

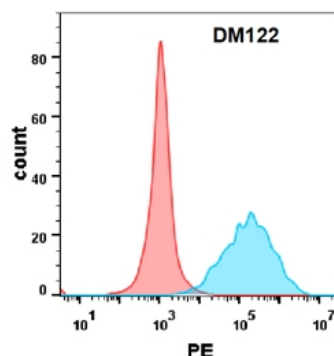


Figure 2. Flow cytometry analysis with Anti-CEACAM5 (DM122) on Expi293 cells transfected with human CEACAM5 (Blue histogram) or Expi293 transfected with irrelevant protein (Red histogram).