

## CDC42 CHICKEN

产品名称: Chicken Cdc42

货号: 21019

基因符号: CDC42

描述: Cdc42 Chicken 兔多抗

背景: Small GTPases are a super-family of cellular signaling regulators. Cdc42 belongs to the Rho sub-family of GTPases that regulate cell motility, cell division, and gene transcription. GTP binding increases the activity of Cdc42, and the hydrolysis of GTP to GDP renders it inactive. GTP hydrolysis is aided by GTPase activating proteins (GAPs), while exchange of GDP for GTP is facilitated by guanine nucleotide exchange factors (GEFs).

免疫原: Recombinant full length Cdc42 蛋白

经过测试的应用: ELISA, WB, IHC

推荐稀释比:

ELISA: 1:100-1:5000

WB: 1:100-1:1000

IHC: 1:100-1:1000

**Concentration:** 1 mg/ml

种属反应性: Chicken

形式: Liquid

克隆性: Polyclonal

亚型: IgY

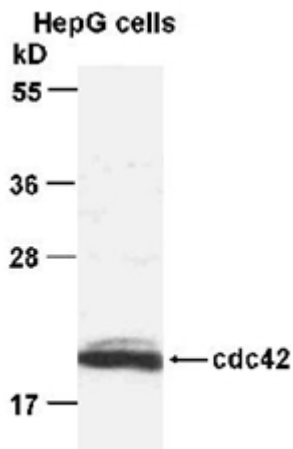
纯化: Purified from egg yolk

成分: PBS (without  $Mg^{2+}$  and  $Ca^{2+}$ ), pH 7.4, 150 mM NaCl, 50% glycerol

种属反应性: Cdc42 antibody recognizes Cdc42 from vertebrates.

储存条件: Store at  $-20^{\circ}C$ . Avoid repeated freezing and thawing

## 蛋白质印迹:



WB: anti-cdc42 pAb

### **Western blot analysis of Cdc42 proteins.**

HepG whole-cell lysate was used for Western blot with the chicken polyclonal Anti-Cdc42 antibody (cat # 21019).