

CD28 (DM63) RABBIT MAB

货号: 28369

产品全名: CD28(DM63) 兔单克隆抗体

基因符号: CD28; Tp44

描述: CD28 antibody(DM63) 兔单克隆抗体

背景: The protein encoded by this gene is essential for T-cell proliferation and survival; cytokine production; and T-helper type-2 development. Several alternatively spliced transcript variants encoding different isoforms have been found for this gene.

经过测试的应用: ELISA; Flow Cyt

推荐稀释比: ELISA 1:5000-10000; Flow Cyt 1:100

种属反应性: Rabbit

亚型: Rabbit IgG

纯化: Purified from cell culture supernatant by affinity chromatography

种属反应性: 人 CD28

成分: Lyophilized from sterile PBS, pH 7.4. 5% - 8% trehalose is added as protectants before lyophilization.

储存和运输: Store at -20°C to -80°C for 12 months in lyophilized form. After reconstitution, if not intended for use within a month, aliquot and store at -80°C (Avoid repeated freezing and thawing).

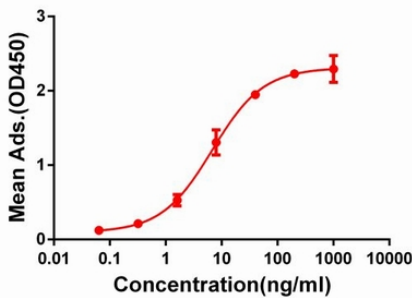


Figure 1. ELISA plate pre-coated by 2 µg/ml (100 µl/well) Human CD28 protein, mFc-His tagged protein 11142 can bind Rabbit anti-CD28 monoclonal antibody (clone: DM63) in a linear range of 1-100 ng/ml.

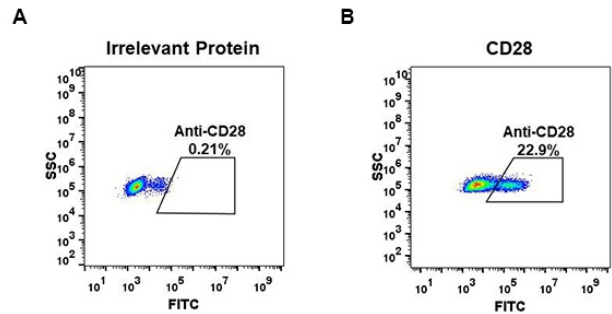


Figure 2. Expi 293 cell line transfected with irrelevant protein (A) and human CD28 (B) were surface stained with Rabbit anti-CD28 monoclonal antibody 1µg/ml (clone: DM63) followed by Alexa 488-conjugated anti-rabbit IgG secondary antibody.

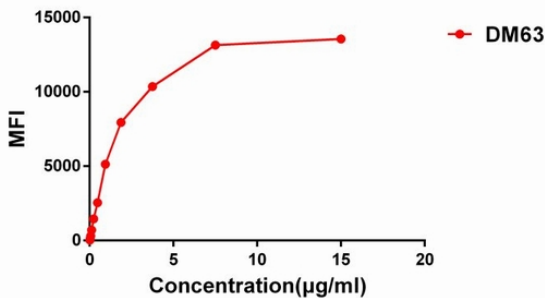


Figure 3. Flow cytometry data of serially titrated Rabbit anti-CD28 monoclonal antibody (clone: DM63) on Jurkat cells. The Y-axis represents the mean fluorescence intensity (MFI) while the X-axis represents the concentration of IgG used.

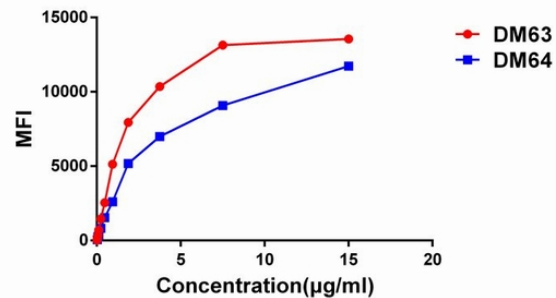


Figure 4. Affinity ranking of different Rabbit anti-CD28 mAb clones by titration of different concentration onto Jurkat cells. The Y-axis represents the mean fluorescence intensity (MFI) while the X-axis represents the concentration of IgG used.