

CD171 (DM155) RABBIT MAB

货号: 28499

产品全名: CD171(DM155) 兔单克隆抗体

基因符号 CAML1; CD171; HSAS; HSAS1; MASA; MIC5; N-CAM-L1; N-CAML1; NCAM-L1; S10; SPG1

描述: CD171 antibody(DM155) 兔单克隆抗体

背景: The protein encoded by this gene is an axonal glycoprotein belonging to the immunoglobulin supergene family. The ectodomain, consisting of several immunoglobulin-like domains and fibronectin-like repeats (type III); is linked via a single transmembrane sequence to a conserved cytoplasmic domain. This cell adhesion molecule plays an important role in nervous system development; including neuronal migration and differentiation. Mutations in the gene cause X-linked neurological syndromes known as CRASH (corpus callosum hypoplasia; retardation; aphasia; spastic paraplegia and hydrocephalus). Alternative splicing of this gene results in multiple transcript variants; some of which include an alternate exon that is considered to be specific to neurons.

经过测试的应用: ELISA; Flow Cyt

推荐稀释比: ELISA 1:5000-10000; Flow Cyt 1:100

种属反应性: Rabbit

亚型: Rabbit IgG

纯化: Purified from cell culture supernatant by affinity chromatography

种属反应性: 人 CD171

成分: Lyophilized from sterile PBS, pH 7.4. 5% - 8% trehalose is added as protectants before lyophilization.

储存和运输: Store at -20°C to -80°C for 12 months in lyophilized form. After reconstitution, if not intended for use within a month, aliquot and store at -80°C (Avoid repeated freezing and thawing).

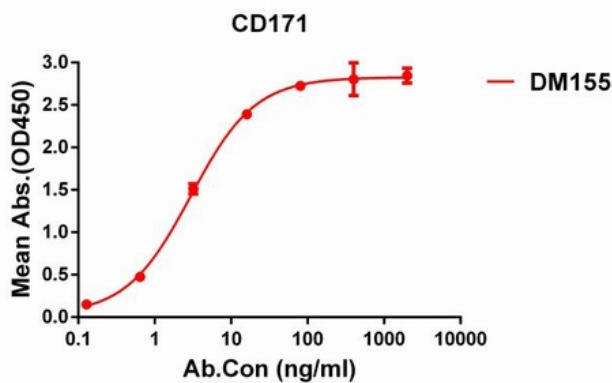


Figure 1. ELISA plate pre-coated by 1 µg/ml (100 µl/well) Human CD171 protein, His tagged protein 11239 can bind Rabbit anti-CD171 monoclonal antibody (clone: DM155) in a linear range of 1-100 ng/ml.

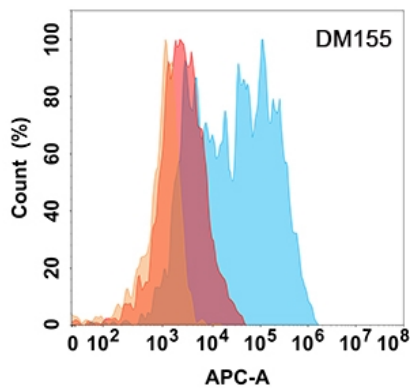


Figure 2. CD171 protein is highly expressed on the surface of Expi293 cell membrane. Flow cytometry analysis with Anti-CD171 (DM155) on Expi293 cells transfected with human CD171 (Blue histogram) or Expi293 transfected with irrelevant protein (Red histogram), and Isotype antibody on Expi293 transfected with irrelevant protein (Orange histogram).