

CD162 (DMC283) IGG1 CHIMERIC MAB

货号: 28191

产品全名: CD162(DMC283) IgG1 Chimeric 单抗

基因符号 PSGL-1;PSGL1;CD162;SELPLG;Selectin P ligand

描述: CD162 antibody(DMC283) IgG1 Chimeric 单抗

背景: This gene encodes a glycoprotein that functions as a high affinity counter-receptor for the cell adhesion molecules P-, E- and L- selectin expressed on myeloid cells and stimulated T lymphocytes. As such; this protein plays a critical role in leukocyte trafficking during inflammation by tethering of leukocytes to activated platelets or endothelia expressing selectins. This protein requires two post-translational modifications; tyrosine sulfation and the addition of the sialyl Lewis x tetrasaccharide (sLex) to its O-linked glycans; for its high-affinity binding activity. Aberrant expression of this gene and polymorphisms in this gene are associated with defects in the innate and adaptive immune response. Alternate splicing results in multiple transcript variants.

经过测试的应用: Flow Cyt

推荐稀释比: Flow Cyt 1:100

种属反应性: Rabbit

亚型: Rabbit:Human Fc chimeric IgG1

纯化: Purified from cell culture supernatant by affinity chromatography

种属反应性: 人 CD162

成分: Lyophilized from sterile PBS, pH 7.4. 5 % – 8% trehalose is added as protectants before lyophilization.

储存和运输: Store at -20°C to -80°C for 12 months in lyophilized form.

After reconstitution, if not intended for use within a month, aliquot and store at -80°C (Avoid repeated freezing and thawing).

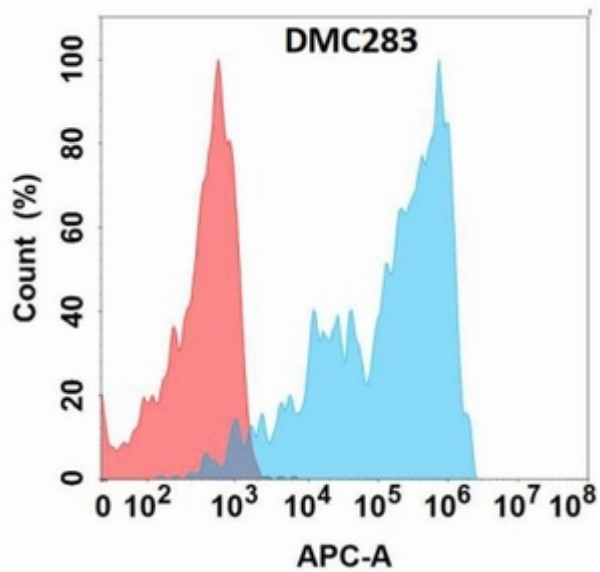


Figure 1. Flow cytometry analysis with Anti-CD162 (DMC283) on Expi293 cells transfected with human CD162 (Blue histogram) or Expi293 transfected with irrelevant protein (Red histogram).