

CD155 (DM146) RABBIT MAB

货号: 28490

产品全名: CD155(DM146) 兔单克隆抗体

基因符号 PVR; FLJ25946; PVS; CD155; TAGE4; HVED; NECL5

描述: CD155 antibody(DM146) 兔单克隆抗体

背景: The protein encoded by this gene is a transmembrane glycoprotein belonging to the immunoglobulin superfamily. The external domain mediates cell attachment to the extracellular matrix molecule vitronectin; while its intracellular domain interacts with the dynein light chain Tctex-1:DYNLT1. The gene is specific to the primate lineage; and serves as a cellular receptor for poliovirus in the first step of poliovirus replication. Multiple transcript variants encoding different isoforms have been found for this gene.

经过测试的应用: ELISA; Flow Cyt

推荐稀释比: ELISA 1:5000-10000; Flow Cyt 1:100

种属反应性: Rabbit

亚型: Rabbit IgG

纯化: Purified from cell culture supernatant by affinity chromatography

种属反应性: 人 CD155

成分: Lyophilized from sterile PBS, pH 7.4. 5% - 8% trehalose is added as protectants before lyophilization.

储存和运输: Store at -20°C to -80°C for 12 months in lyophilized form. After reconstitution, if not intended for use within a month, aliquot and store at -80°C (Avoid repeated freezing and thawing).

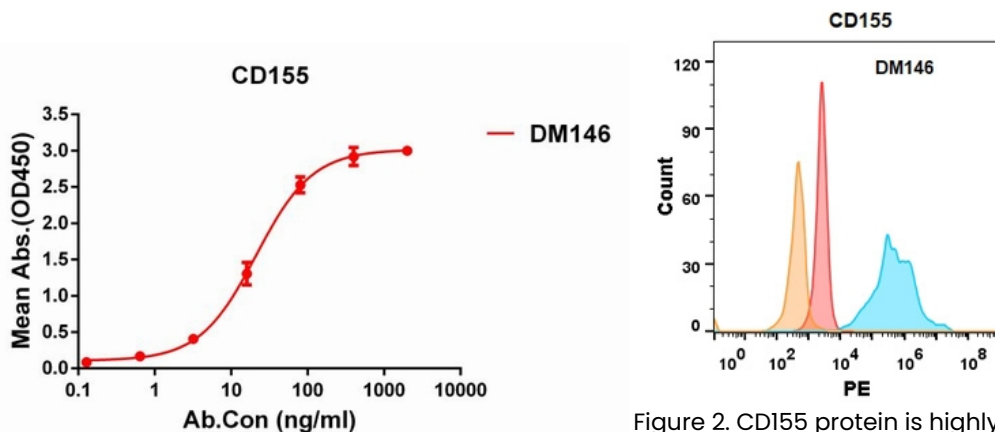


Figure 1. ELISA plate pre-coated by 1 µg/ml (100 µl/well) Human CD155 protein, mFc tagged protein 11155 can bind Rabbit anti-CD155 monoclonal antibody (clone: DM146) in a linear range of 5-100 ng/ml.

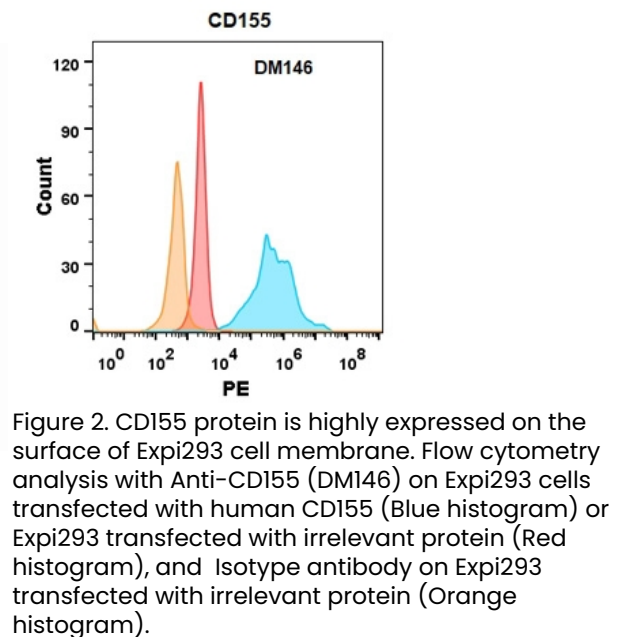


Figure 2. CD155 protein is highly expressed on the surface of Expi293 cell membrane. Flow cytometry analysis with Anti-CD155 (DM146) on Expi293 cells transfected with human CD155 (Blue histogram) or Expi293 transfected with irrelevant protein (Red histogram), and Isotype antibody on Expi293 transfected with irrelevant protein (Orange histogram).