

CD123 (DM33) RABBIT MAB

货号: 28320

产品全名: CD123(DM33) 兔单克隆抗体

基因符号 IL3R; IL3RA; IL-3Ra; IL-3R-alpha; IL3RAY; IL3RX; IL3RY; CD123 antigen; CD123; hIL3Ra; hIL-3Ra; MGC34174; IL-3 R alpha

描述: CD123 antibody(DM33) 兔单克隆抗体

背景: Interleukin 3 receptor alpha (low affinity) (IL3RA); also known as CD123 (Cluster of Differentiation 123) is a 70-kD glycoprotein member of the hematopoietin receptor superfamily. This protein associates with a beta subunit common to the receptors for IL-??

经过测试的应用: ELISA; Flow Cyt

推荐稀释比: ELISA 1:5000-10000; Flow Cyt 1:100

种属反应性: Rabbit

亚型: Rabbit IgG

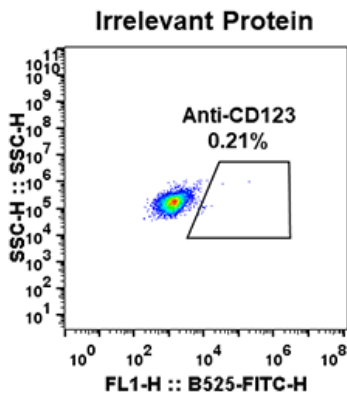
纯化: Purified from cell culture supernatant by affinity chromatography

种属反应性: 人 CD123

成分: Lyophilized from sterile PBS, pH 7.4. 5% - 8% trehalose is added as protectants before lyophilization.

储存和运输: Store at -20°C to -80°C for 12 months in lyophilized form. After reconstitution, if not intended for use within a month, aliquot and store at -80°C (Avoid repeated freezing and thawing).

A



B

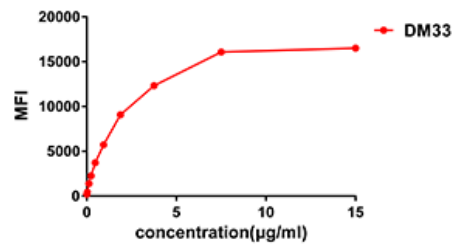
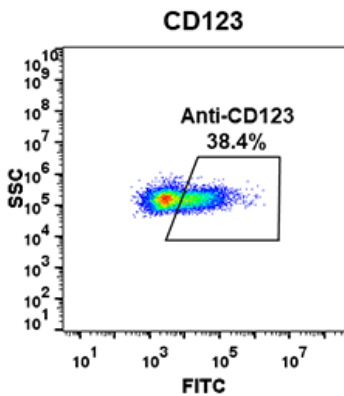


Figure 2. Flow cytometry data of serially titrated Rabbit anti-CD123 monoclonal antibody (clone: DM33) on THP-1 cells. The Y-axis represents the mean fluorescence intensity (MFI) while the X-axis represents the concentration of IgG used.

Figure 1. Expi 293 cell line transfected with irrelevant protein (left) and human CD123(right) were surface stained with Rabbit anti-CD123 monoclonal antibody 1µg/ml (clone: DM33) followed by Alexa 488-conjugated anti-rabbit IgG secondary antibody.

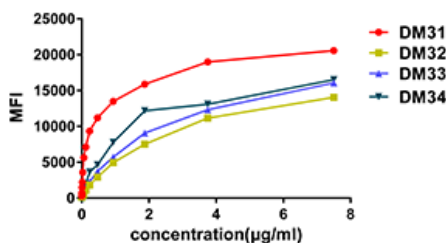


Figure 3. Affinity ranking of different Rabbit anti-CD123 mAb clones by titration of different concentration onto THP-1 cells. The Y-axis represents the mean fluorescence intensity (MFI) while the X-axis represents the concentration of IgG used.



Product Description

Pioneering GTPase and Oncogene Product Development since 2010
