

## CSF1R MAB (CABIRALIZUMAB)

目录: 28063

产品名称: CSF1R(Cabiralizumab) Monoclonal Antibody

基因符号: CSF1R;-FMS;D115;SFR;IM2;MS;-CSFR

描述: CSF1R(cabiralizumab ) Monoclonal Antibody

背景: Research grade biosimilar. Not for use in therapeutic or diagnostic procedures for humans or animals.

经过测试的应用: ELISA; Flow Cyt

推荐稀释度: ELISA 1:5000-10000; Flow Cyt 1:100

种属反应性: Humanized

亚型: IgG4

纯化: Purified from cell culture supernatant by affinity chromatography

种属反应性: Human CSF1R

成分: Lyophilized from sterile PBS, pH 7.4. 5% - 8% trehalose is added as protectants before lyophilization.

储存和运输: Store at -20°C to -80°C for 12 months in lyophilized form. After reconstitution, if not intended for use within a month, aliquot and store at -80°C (Avoid repeated freezing and thawing).

**Anti-CSF1R (cabiralizumab biosimilar) mAb ELISA**  
0.1µg of Human CSF1R, His Tagged protein per well

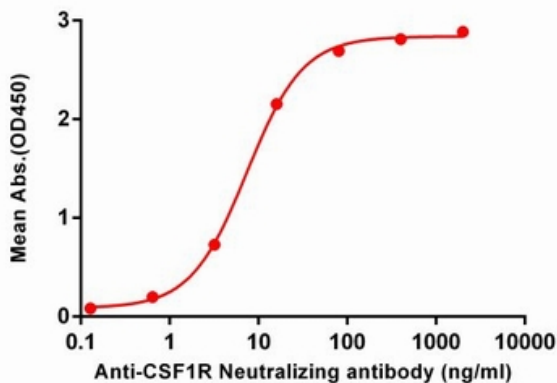


Figure 1. ELISA plate pre-coated by 1 µg/ml (100 µl/well) Human CSF1R, His tagged protein 11190 can bind CSF1R Neutralizing antibody (28063) in a linear range of 0.2-16 ng/ml.

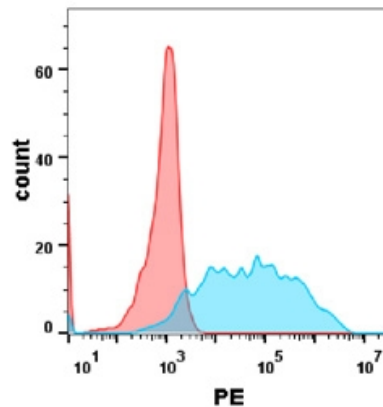


Figure 2. Flow cytometry analysis with CSF1R mAb 1 µg/ml (cabiralizumab) on Expi293 cells transfected with human CSF1R (Blue histogram) or Expi293 transfected with irrelevant protein (Red histogram).