

BRCA1(1-120)

产品名称: BRCA1(1-120) 小鼠单抗

货号: 26351-1

基因符号: BRCA1, BRCC1, IRIS, PNCA4, PP1R53, PSCP

描述: BRCA1(1-120) 小鼠单抗

背景: BRCA1 is normally expressed in cells of breast and other tissues, where it helps repair damaged DNA or destroy cells if DNA cannot be repaired. It is involved in the repair of chromosomal damage with an important role in the error-free repair of DNA double-strand breaks. If BRCA1 itself is damaged by a BRCA1 mutation, damaged DNA is not repaired properly, and this increases the risk for breast cancer.

免疫原: Purified BRCA1 (1-120) protein, human origin

经过测试的应用: ELISA, WB, IHC

推荐稀释比:

ELISA: 1:1000-1:2000

WB: 1:500-1:1000

IHC: 1:50-1:100

Concentration: 2.5 mg/ml

种属反应性: Mouse

形式: Liquid

克隆性: Monoclonal

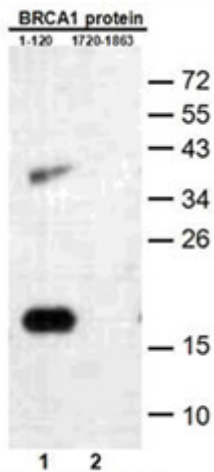
亚型: IgG

纯化: Purified from ascites

成分: PBS (without Mg²⁺ and Ca²⁺), pH 7.4, 150 mM NaCl, 50% glycerol

种属反应性: Recognizes BRCA1(1-120) of vertebrates.

储存条件: Store at -20°C. Avoid repeated freezing and thawing

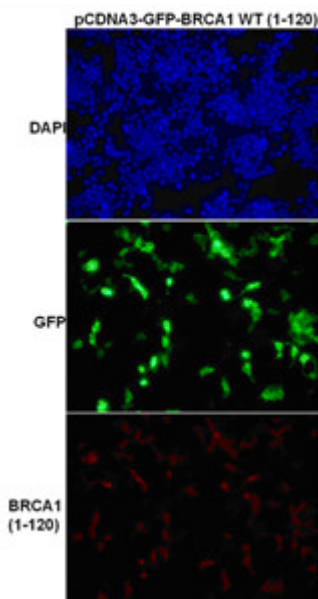


蛋白质印迹: WB: anti-BRCA1 mAb

Western blot analysis of recombinant BRCA1 (1-120) and BRCA1 (1720-1863) proteins.

Purified His-tagged BRCA1 (1-120) protein (lane1) and corresponding His-tagged BRCA1 (1720-1831) (lane2) were blotted with Anti-BRCA1(1-120) monoclonal antibody (货号:26351-1).

Immunofluorescence:



Immunofluorescence of cells expressing BRCA1(1-120)protein with Anti-BRCA1(1-120) antibody.

HEK293T cells was transfected with pCDNA3-GFP-BRCA1 (1-120) plasmid, then fixed and stained with Anti-BRCA1(1-120) monoclonal antibody (货号:26351-1).