

BRAF(V600E)

产品名称: BRAF(V600E) 小鼠单抗

货号: 26039

基因符号: BRaf

描述: BRaf(V600E) 小鼠单抗

背景: B-Raf is a member of the Raf family of Ser/Thr protein kinases. It functions downstream of Ras to regulate the MAP kinase signaling pathway. Mutations in the BRAF gene cause diseases. Inherited mutations in BRAF cause cardiofaciocutaneous syndrome. Acquired mutations in BRAF have been found in cancers

免疫原: A synthetic peptide from the internal region of BRaf(V600E), human origin.

经过测试的应用: ELISA, WB, IHC, IP

推荐稀释比: ELISA: 1:100-1:5000WB: 1:100-1:2000IHC: 1:100-1:1000

Concentration: 1 mg/ml

种属反应性: Mouse

形式: Liquid

克隆性: Monoclonal

亚型: IgG2b

纯化: Purified from ascites

Storage buffer:

Preservative: No

成分: PBS (without Mg^{2+} and Ca^{2+}), pH 7.4, 150 mM NaCl, 50% glycerol

种属反应性: Recognizes B-Raf(V600E), but not wild type B-Raf proteins from vertebrates.

储存条件: Store at $-20^{\circ}C$. Avoid repeated freezing and thawing

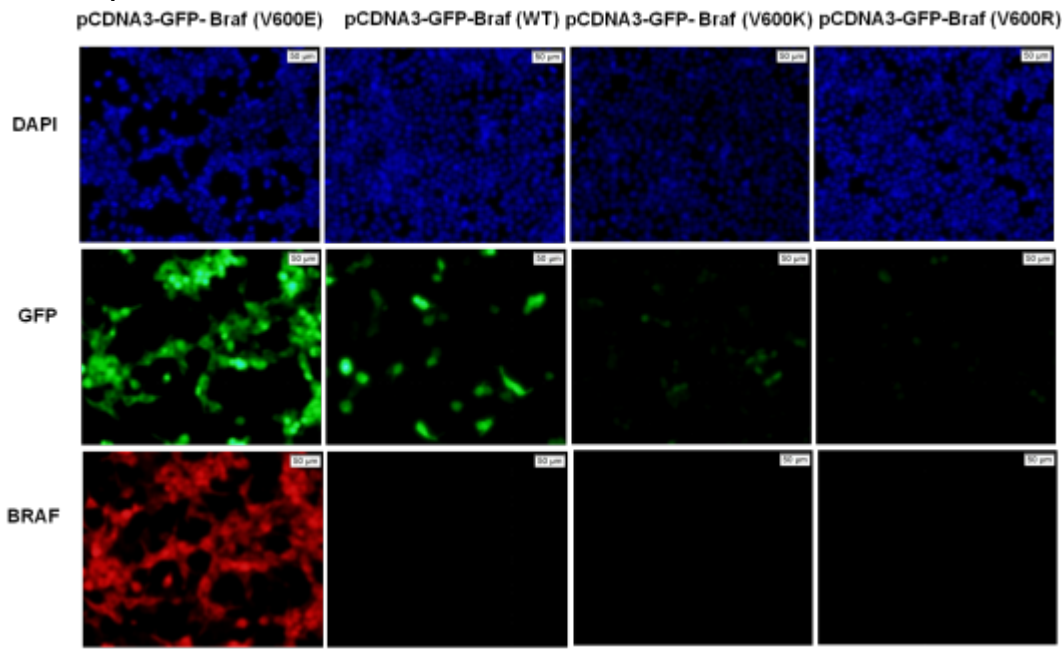
蛋白质印迹:



Western blot analysis of recombinant B-raf proteins with anti-BRaf(V600E) antibody. Purified His - tagged B-Raf(V600E) (amino acids 513-693) (lane 1) ? corresponding wild type protein (lane 2), His - tagged B-Raf(V600D) (lane 3) , His - tagged B-Raf(V600A) (lane 4) , His - tagged B-Raf(V600G) (lane 5) , His - tagged B-Raf(V600K) (lane 6), His - tagged B-Raf(V600R) (lane 7), and His - tagged B-Raf(V600M) (lane 8) were blotted with anti-B-Raf(V600E) monoclonal

FOR RESEARCH USE ONLY. NOT FOR DIAGNOSTIC APPLICATIONS

antibody (Cat # 26039) .Immunofluorescence:



monoclonal antibody (货号: 26039). Tissue samples were fixed with formaldehyde and blocked with 1% serum for 15 min at 37 °C. Antigen retrieval was by heat mediation in citrate buffer (pH6). Samples were then incubated with primary antibody (1:100) overnight at 4°C. A HRP-conjugated Goat anti-mouse IgG (dilution 1:50) was used as secondary antibody. Immunohistochemical analysis of paraffin-embedded Thyroid Carcinoma tissue -with anti-BRaf (V600E) monoclonal antibody (货号: 26039). Tissue samples were fixed with paraffin. Samples were then incubated with primary antibody (1:100) overnight at 4°C. An HRP-conjugated Goat anti-mouse IgG (dilution 1:50) was used as the secondary antibody. Allele-specific PCR validated to be Negative for BRAF V600E. Immunohistochemical analysis of paraffin-embedded Thyroid Carcinoma tissue -with anti BRaf(V600E) monoclonal antibody (货号: 26039). Tissue samples were fixed with paraffin. Samples were then incubated with primary antibody (1:100) overnight at 4°C. A HRP-conjugated Goat anti-mouse IgG (dilution 1:50) was used as secondary antibody. Allele specific PCR validated to be Negative for BRAF V600E.

