

CCR8 MAB (BMS 986340 MAB)

货号: 28113

产品全名: CCR8(BMS 986340) 单抗

基因符号 CC-CR-8;CCR-8;CDW198;CKRL1;CMKBR8;CMKBRL2;CY6;GPRCY6;TER1

描述: CCR8(BMS 986340) 单抗

背景: Research grade biosimilar. Not for use in therapeutic or diagnostic procedures for humans or animals.

经过测试的应用: ELISA; Flow Cyt

推荐稀释比: ELISA 1:5000-10000; Flow Cyt 1:100

种属反应性: Humanized

亚型: IgG1

纯化: Purified from cell culture supernatant by affinity chromatography

种属反应性: 人 CCR8

成分: Lyophilized from sterile PBS, pH 7.4. 5% - 8% trehalose is added as protectants before lyophilization.

储存和运输: Store at -20°C to -80°C for 12 months in lyophilized form. After reconstitution, if not intended for use within a month, aliquot and store at -80°C (Avoid repeated freezing and thawing).

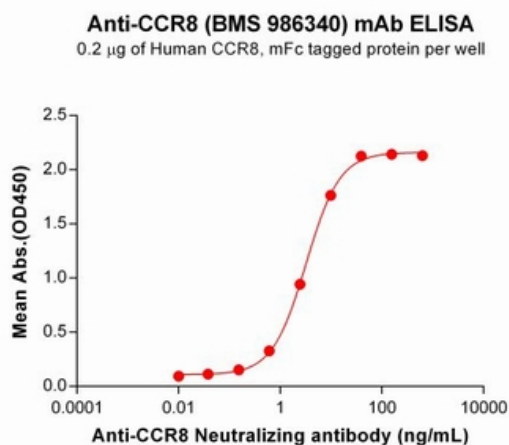


Figure 1. ELISA plate pre-coated by $2\ \mu\text{g}/\text{mL}$ ($100\ \mu\text{l}/\text{well}$) Human CCR8 Protein, mFc Tag (11772) can bind Anti-CCR8 Neutralizing antibody (28113) in a linear range of $0.15\text{--}39.06\ \text{ng}/\text{mL}$.

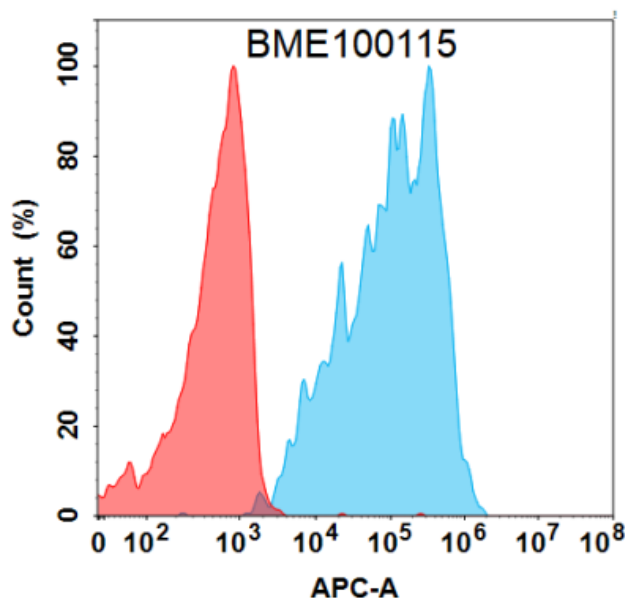


Figure 2. Flow cytometry analysis with $1\ \mu\text{g}/\text{mL}$ Anti-CCR8 (BMS 986340) mAb (28113) on Expi293 cells transfected with Human CCR8 protein (Blue histogram) or Expi293 transfected with irrelevant protein (Red histogram).