

## B7-H6 (DM153) RABBIT MAB

货号: 28497

产品全名: B7-H6(DM153) 兔单克隆抗体

基因符号 B7-H6;NCR3LG1;B7 Homolog 6

描述: B7-H6 antibody(DM153) 兔单克隆抗体

背景: B7-H6 belongs to the B7 family (see MIM 605402) and is selectively expressed on tumor cells. Interaction of B7H6 with Nkp30 (NCR3; MIM 611550) results in natural killer (NK) cell activation and cytotoxicity.

经过测试的应用: ELISA; Flow Cyt

推荐稀释比: ELISA 1:5000-10000; Flow Cyt 1:100

种属反应性: Rabbit

亚型: Rabbit IgG

纯化: Purified from cell culture supernatant by affinity chromatography

种属反应性: 人 B7-H6

成分: Lyophilized from sterile PBS, pH 7.4. 5% - 8% trehalose is added as protectants before lyophilization.

储存和运输: Store at -20°C to -80°C for 12 months in lyophilized form. After reconstitution, if not intended for use within a month, aliquot and store at -80°C (Avoid repeated freezing and thawing).

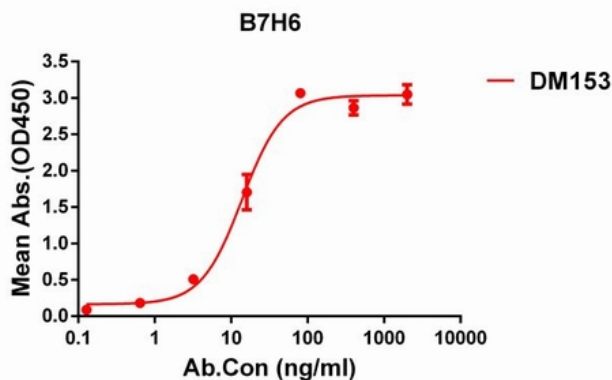


Figure 1. ELISA plate pre-coated by 1 µg/ml (100 µl/well) Human B7H6 protein, His tagged protein 11313 can bind Rabbit anti-B7H6 monoclonal antibody (clone: DM153) in a linear range of 5-100 ng/ml.

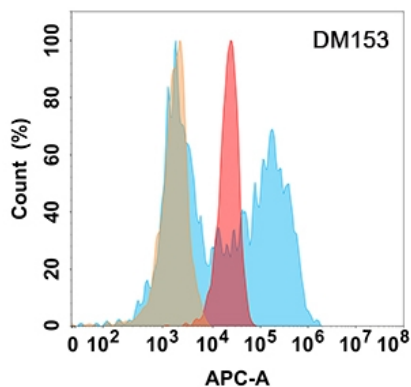


Figure 2. B7H6 protein is highly expressed on the surface of Expi293 cell membrane. Flow cytometry analysis with Anti-B7H6 (DM153) on Expi293 cells transfected with human B7H6 (Blue histogram) or Expi293 transfected with irrelevant protein (Red histogram), and Isotype antibody on Expi293 transfected with irrelevant protein (Orange histogram).