

## ATM(F858L)

产品名称: ATM(F858L) 小鼠单抗

货号: 26141

基因符号: ATM

描述: ATM(F858L) 小鼠单抗

背景: Ataxia telangiectasia mutated (ATM) is a serine/threonine protein kinase that is recruited and activated by DNA double-strand breaks. It phosphorylates several key proteins that initiate activation of the DNA damage checkpoint, leading to cell cycle arrest, DNA repair or apoptosis. Activity of ATM protein is under tight control, and mutation of ATM can cause disease such as Ataxia telangiectasia (AT) and cancers.

免疫原: A synthetic peptide from the internal region of ATM which includes the mutation of F858L, human origin.

经过测试的应用: ELISA, WB, IHC

推荐稀释比:

ELISA: 1:1000-1:5000

WB: 1:100-1:1000

IHC: 1:50-1:100

**Concentration:** 1 mg/ml

种属反应性: Mouse

形式: Liquid

克隆性: Monoclonal

亚型: IgG

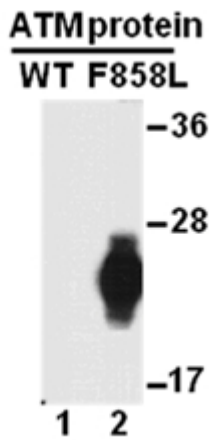
纯化: Purified from ascites

成分: PBS (without  $Mg^{2+}$  and  $Ca^{2+}$ ), pH 7.4, 150 mM NaCl, 50% glycerol

种属反应性: Recognizes ATM(F858L), but not wild type ATM protein from vertebrates.

储存条件: Store at  $-20^{\circ}C$ . Avoid repeated freezing and thawing

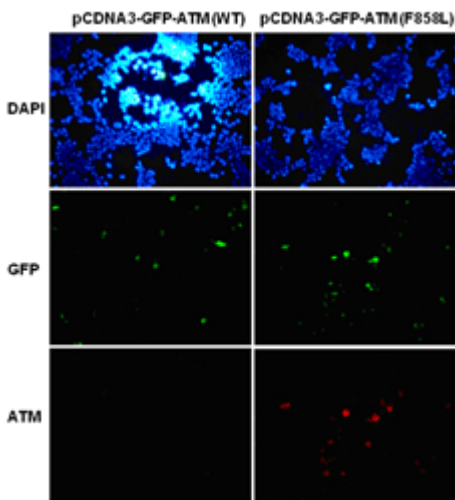
## 蛋白质印迹:



### WB: Anti-ATM(F858L) mAb

Western blot analysis of recombinant ATM(F858L) and wild type proteins. Purified His-tagged ATM(F858L) protein (amino acids 2400-3056, lane 2) and corresponding wild type protein (lane 1) were blotted with Anti-ATM(F858L) 小鼠单抗 (货号:26141).

### Immunofluorescence:



Immunofluorescence of cells expressing ATM(F858L) protein with anti-ATM(F858L) antibody. HEK293T cells were transfected with pCDNA3-GFP-ATM (WT) plasmid (left column) or pCDNA3-GFP-ATM(F858L) plasmid (right column), then fixed and stained with Anti-ATM(F858L) monoclonal antibody (货号:26141).