

## ATM PAB

产品名称: ATM 兔多抗

货号: 21276

基因符号: ATM

描述: ATM 兔多抗

背景: Ataxia telangiectasia mutated (ATM) is a serine/threonine protein kinase that is recruited and activated by DNA double-strand breaks. It phosphorylates several key proteins that initiate activation of the DNA damage checkpoint, leading to cell cycle arrest, DNA repair or apoptosis. Activity of ATM protein is under tight control, and mutation of ATM can cause disease such as Ataxia telangiectasia (AT) and cancers.

免疫原: Purified ATM protein, human origin.

经过测试的应用: ELISA, WB, IHC

推荐稀释比:

ELISA: 1:1000-1:5000

WB: 1:100-1:1000

IHC: 1:50-1:200

**Concentration:** 0.2 mg/ml

种属反应性: Rabbit

形式: Liquid

克隆性: Polyclonal

亚型:

纯化: Purified from serum

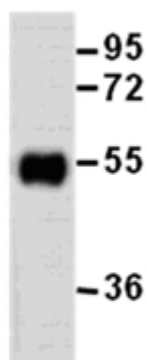
成分: PBS (without  $Mg^{2+}$  and  $Ca^{2+}$ ), pH 7.4, 150 mM NaCl, 50% glycerol

种属反应性: Recognizes ATM of vertebrates.

储存条件: Store at  $-20^{\circ}C$ . Avoid repeated freezing and thawing

蛋白质印迹:

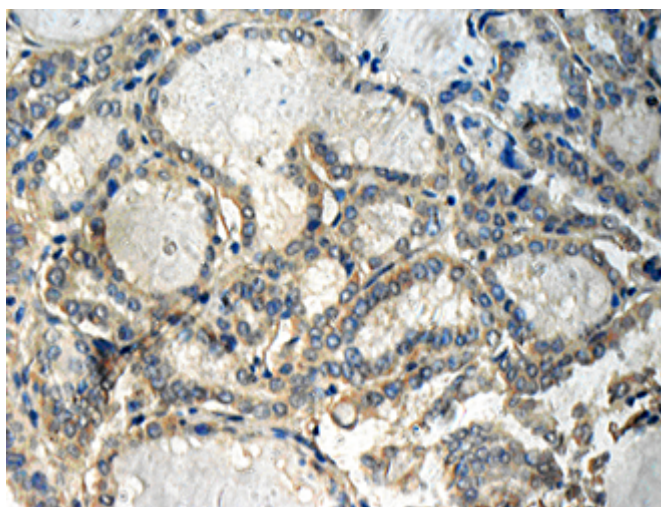
## ATM protein



WB: Anti-ATMpAb

**Western blot analysis of recombinant ATM protein.** Purified His-tagged ATM protein was blotted with Anti-ATM 兔多抗 (货号:21276).

## Immunohistochemistry:



Immunohistochemical analysis of paraffin-embedded human thyroid cancer tissue with Anti-ATM 兔多抗 (货号:21276). Tissue samples were fixed with formaldehyde and blocked with 1% serum for 15 min at 37 °C. Antigen retrieval was by heat mediation in citrate buffer (pH6). Samples were then incubated with primary antibody (1:50 dilution) overnight at 4°C. A HRP-conjugated Goat anti-mouse IgG (1:50 dilution) was used as secondary antibody.