

## PDL1 MAB (ATEZOLIZUMAB)

货号: 28018

产品全名: PDL1 (Atezolizumab) 单抗

基因符号 PD-L1;CD274;B7-H1;PDCD1L1;PDCD1LG1

描述: PDL1 (atezolizumab) 单抗

背景: Research grade biosimilar. Not for use in therapeutic or diagnostic procedures for humans or animals.

经过测试的应用: ELISA; Flow Cyt

推荐稀释比: ELISA 1:5000-10000; Flow Cyt 1:100

种属反应性: Humanized

亚型: IgG1

纯化: Purified from cell culture supernatant by affinity chromatography

种属反应性: 人 PDL1

成分: Lyophilized from sterile PBS, pH 7.4. 5% - 8% trehalose is added as protectants before lyophilization.

储存和运输: Store at -20°C to -80°C for 12 months in lyophilized form. After reconstitution, if not intended for use within a month, aliquot and store at -80°C (Avoid repeated freezing and thawing).

### Anti-PDL1 (atezolizumab biosimilar) mAb ELISA

0.2 µg of Human PDL1, mFc-His Tagged protein per well

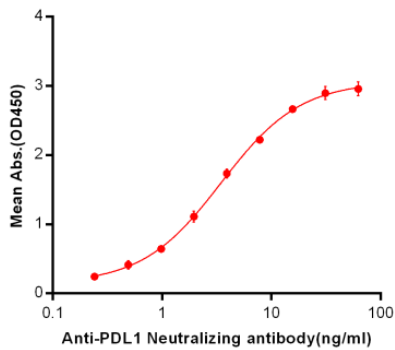


Figure 1. ELISA plate pre-coated by 2 µg/ml (100 µl/well) Human PDL1, mFc-His tagged protein 11151 can bind Anti-PDL1 Neutralizing antibody anti-human IgG secondary antibody in a linear range of 0.24-7.81 ng/ml.

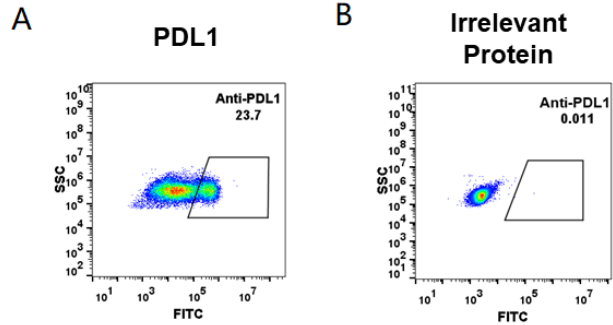


Figure 2. HEK293 cell line transfected with irrelevant protein (B) and human PDL1 (A) were surface stained with anti-PDL1 neutralizing antibody 1µg/ml (atezolizumab) followed by Alexa 488-conjugated anti-human IgG secondary antibody.