

## ARL3 MAB

产品名称: Arl3 小鼠单抗

货号: 26070

基因符号: ARL3

描述: Arl3 小鼠单抗

背景: Arl3 (Arf-like 3) is an Arf family protein. Arl3 binds microtubules to alter specific aspects of cytokinesis. It has been proposed that retinitis pigmentosa 2 functions in concert with Arl3 to link the cell membrane and the cytoskeleton in photoreceptors as part of the cell signaling or vesicular transport machinery.

免疫原: : Recombinant Arl3 蛋白

经过测试的应用: ELISA, WB, IHC, IP

推荐稀释比:

ELISA: 1:100-1:5000

WB: 1:100-1:2000

IHC: 1:10-1:100

**Concentration:** 1 mg/ml

种属反应性: **Mouse**

形式: Liquid

克隆性: Monoclonal

亚型: IgG

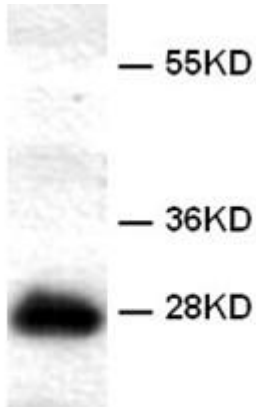
纯化: Purified from ascites

成分: PBS (without  $Mg^{2+}$  and  $Ca^{2+}$ ), pH 7.4, 150 mM NaCl, 50% glycerol

种属反应性: Arl3 antibody recognizes Arl3 from vertebrates.

储存条件: Store at  $-20^{\circ}C$ . Avoid repeated freezing and thawing

蛋白质印迹:



WB: Anti-Arl3 mAb

**Western blot analysis of recombinant Arl3 proteins.**

Purified his-tagged Arl3 protein (货号: 10152) was blotted with anti-Arl3 monoclonal antibody (货号: 26070).