

ARF1 PAB

产品名称: Arf1 兔多抗

货号: 21030

基因符号: ARF1

描述: Arf1 兔多抗

背景: ARF1 (ADP-ribosylation factor 1) is a member of the ARF super-family. ARF genes encode small GTPases that increase the ADP-ribosyltransferase activity of cholera toxin and are critical for vesicular trafficking as activators of phospholipase D. ARF1 protein is localized to the Golgi apparatus and has a central role in intra-Golgi transport.

免疫原: A synthetic peptide from the internal region of Arf1 protein.

经过测试的应用: ELISA, WB, IHC

推荐稀释比: ELISA 1:100-1:5000

WB 1:100-1:2000

IHC 1:100-1:1000

Concentration: 0.2 mg/ml

种属反应性: Rabbit

形式: Liquid

克隆性: Polyclonal

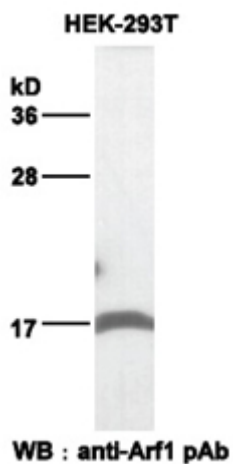
纯化: Purified from serum

成分: PBS (without Mg^{2+} and Ca^{2+}), pH 7.4, 150 mM NaCl, 50% glycerol

种属反应性: Arf1 antibody recognizes Arf1, Arf2 and Arf3 from vertebrates.

储存条件: Store at $-20^{\circ}C$. Avoid repeated freezing and thawing

蛋白质印迹:



Western blot analysis of Arf1 proteins.

HEK-293T cell lysate was used for Western blot with anti-Arf1 兔多抗 (cat # 21030).