

ARF1 MAB

Arf1 Monoclonal Antibody

货号: 26019

基因符号: ARF1

描述: Arf1 小鼠单克隆抗体

背景: ARF1 (ADP-ribosylation factor 1) is a member of the ARF super-family. ARF genes encode small GTPases that increase the ADP-ribosyltransferase activity of cholera toxin and are critical for vesicular trafficking as activators of phospholipase D. ARF1 protein is localized to the Golgi apparatus and has a central role in intra-Golgi transport.

免疫原: Recombinant full length protein of Arf1.

经过测试的应用: ELISA, WB, IHC, IP

推荐稀释度:

ELISA: 1:100-1:5000

WB: 1:100-1:2000

IHC: 1:50-1:100

浓度: 1 mg/ml

种属反应性: Mouse

形式: Liquid

克隆性: Monoclonal

亚型: IgG

纯化:: Purified from ascites

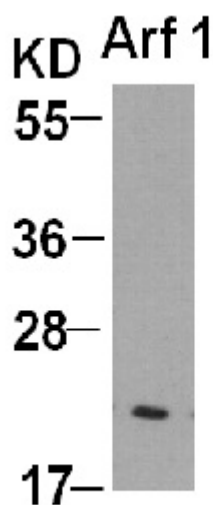
Preservative: No

成分: PBS (without Mg²⁺ and Ca²⁺), pH 7.4, 150 mM NaCl, 50% glycerol

种属反应性: Arf1 antibody recognizes Arf1 (maybe Arf2 and Arf3) of vertebrates.

储存条件:: Store at -20°C. Avoid repeated freezing and thawing

Western blot:



WB: anti-Arf1 mAb

Western blot analysis of Arf1 proteins.