

ZYX RABBIT MAB

货号: N263102

产品全名: ZYX 兔单克隆抗体

基因符号 ESP2; HED2; ZYX; Zyxin2

UNIPROT ID: Q15942

背景: Zyxin binds alpha-actinin and the CRP proteins and is implicated in the regulation and modulation of actin filaments organization, cell adhesion, cell motility, mitosis, and signal transduction. Zyxin may shuttle between focal adhesion plaques and the nucleus. It has been suggested that zyxin is involved in gene transcription by its association with transcription factors in the nucleus.

抗原: A synthetic peptide of human Zyxin

经过测试的应用: WB,IHC-F,IHC-P,ICC/IF,IP

推荐稀释比: WB: 1/500-1/1000 IHC: 1/50-1/100 IF: 1/50-1/200 IP: 1/20

种属反应性: Rabbit

克隆性: Rabbit Monoclonal

克隆编号: R01-8C8

分子量: Calculated MW: 61 kDa; Observed MW: 78 kDa

亚型: IgG

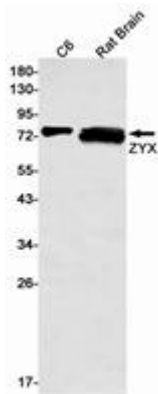
纯化: Affinity Purified

种属反应性: Human,Rat

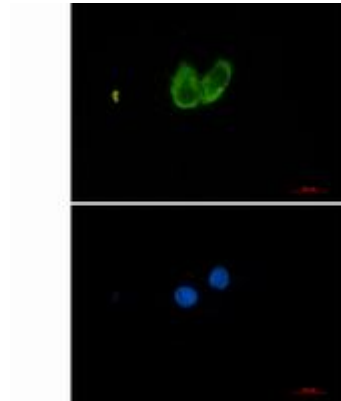
成分: PBS (without Mg²⁺ and Ca²⁺), pH 7.3 containing 50% glycerol, 0.5% BSA and 0.02% sodium azide

研究领域: Neuroscience

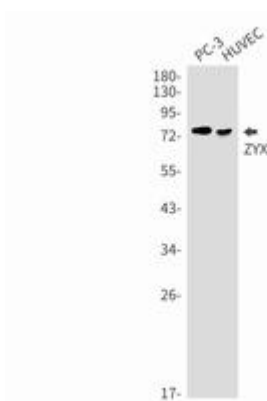
储存和运输: Store at -20°C. Avoid repeated freezing and thawing



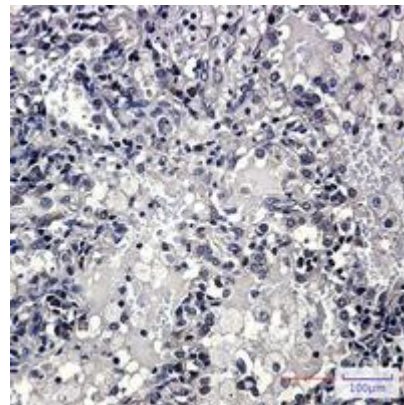
Western blot analysis of ZYX in C6, rat Brain lysates using ZYX antibody



Immunocytochemistry analysis of ZYX (green) in Hela using ZYX antibody, and DAPI (blue).



Western blot analysis of ZYX in PC-3, HUVEC lysates using ZYX antibody.



Immunohistochemistry analysis of paraffin-embedded Human lung cancer using Zyxin antibody. High-pressure and temperature Sodium Citrate pH 6.0 was used for antigen retrieval.