

## ZNF688 RABBIT PAB

货号: S219042

产品全名: ZNF688 兔多抗

基因符号

**UNIPROT ID:** P0C7X2 (Gene Accession - BC018997)

背景: May be involved in transcriptional regulation.

抗原: Fusion protein of human ZNF688

经过测试的应用: ELISA, WB, IHC

推荐稀释比: IHC: 50-200;WB: 500-2000;ELISA: 5000-10000

种属反应性: Rabbit

克隆性: Rabbit Polyclonal

亚型: Immunogen-specific rabbit IgG

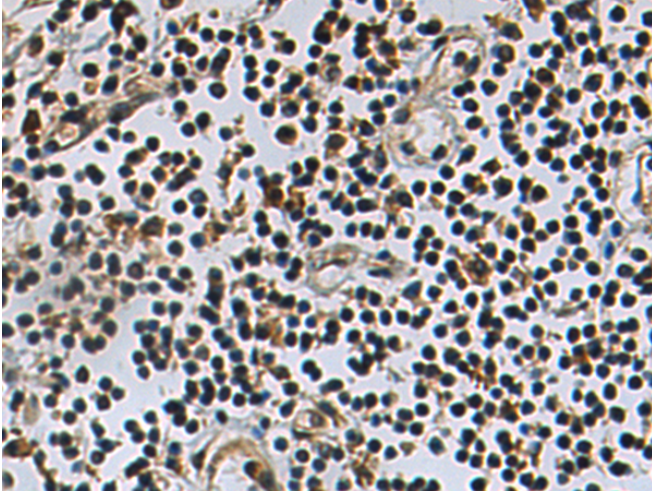
纯化: Antigen affinity purification

种属反应性: Human

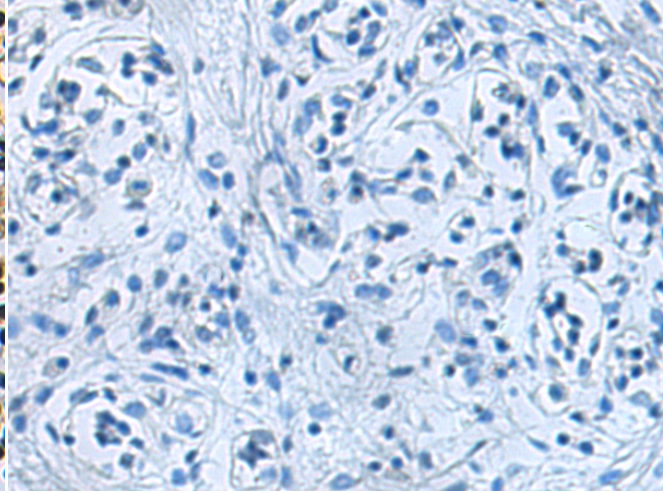
成分: PBS (without Mg<sup>2+</sup> and Ca<sup>2+</sup>), pH 7.4, 150 mM NaCl, 0.05% Sodium Azide and 40% glycerol

研究领域: Epigenetics and Nuclear Signaling

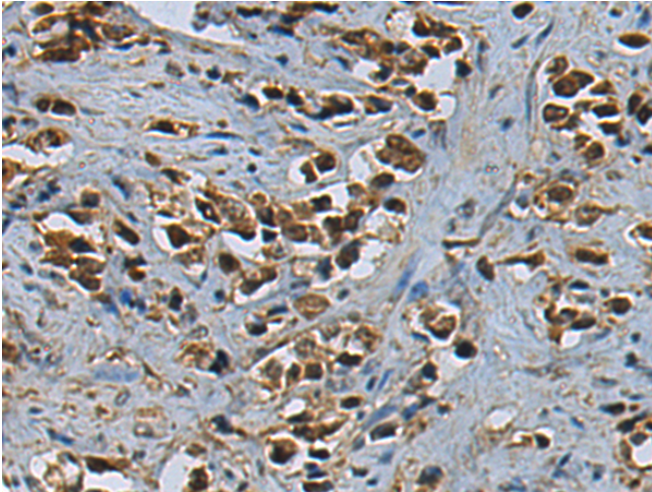
储存和运输: Store at -20°C. Avoid repeated freezing and thawing



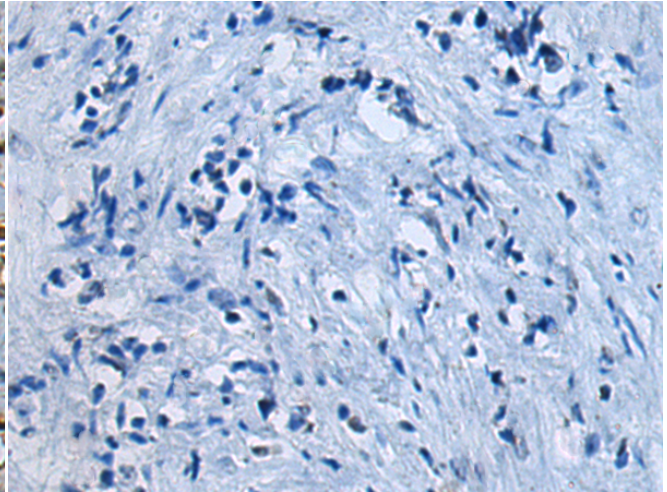
Immunohistochemistry analysis of paraffin embedded Human breast cancer tissue using 219042(ZNF688 Antibody) at a dilution of 1/90(Nucleus).



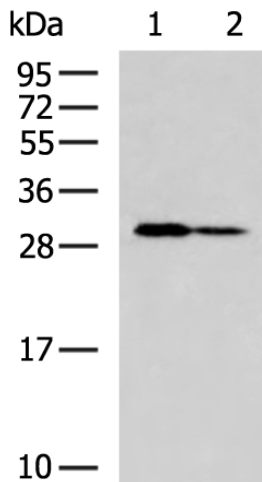
In comparison with the IHC on the left, the same paraffin-embedded Human breast cancer tissue is first treated with the fusion protein and then with 219042(Anti-ZNF688 Antibody) at dilution 1/90.



The image on the left is immunohistochemistry of paraffin-embedded Human prostate cancer tissue using 219042(Anti-ZNF688 Antibody) at a dilution of 1/90.



In comparison with the IHC on the left, the same paraffin-embedded Human prostate cancer tissue is first treated with fusion protein and then with D225701(Anti-ZNF688 Antibody) at dilution 1/90.



Gel: 12%SDS-PAGE, Lysate: 40 µg;  
Lane 1-2: A172 and 231 cell lysates;  
Primary antibody: 219042(ZNF688 Antibody) at dilution 1/700;  
Secondary antibody: HRP-conjugated Goat anti rabbit IgG at 1/5000 dilution;  
Exposure time: 10 seconds



# Product Description

Pioneering GTPase and Oncogene Product Development since 2010

---