

## ZNF639 RABBIT PAB

货号: S219484

产品全名: ZNF639 兔多抗

基因符号 ZASC1; ANC-2H01; ANC\_2H01

**UNIPROT ID:** Q9UID6 (Gene Accession - BC020500)

**背景:** This gene encodes a member of the Kruppel-like zinc finger family of proteins. Amplification and overexpression of this gene have been observed in esophageal squamous cell carcinoma. The encoded protein has been shown to bind DNA in a sequence-specific manner and may regulate HIV-1 gene expression. Alternative splicing results in multiple transcript variants.

**抗原:** Fusion protein of human ZNF639

**经过测试的应用:** ELISA, IHC

**推荐稀释比:** IHC: 100-300; ELISA: 5000-10000

**种属反应性:** Rabbit

**克隆性:** Rabbit Polyclonal

**亚型:** Immunogen-specific rabbit IgG

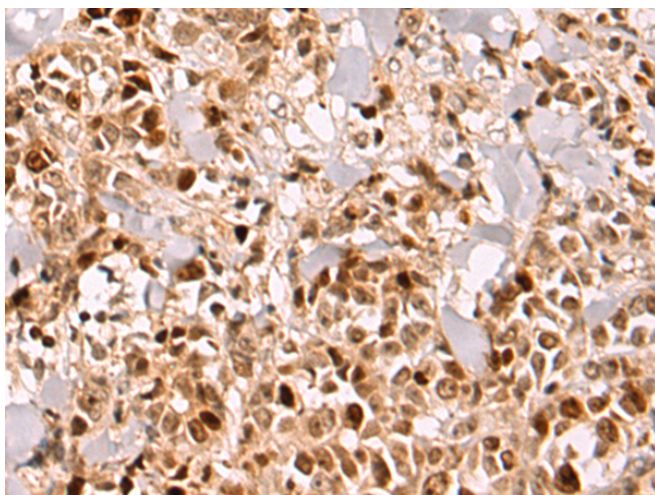
**纯化:** Antigen affinity purification

**种属反应性:** Human, Mouse, Rat

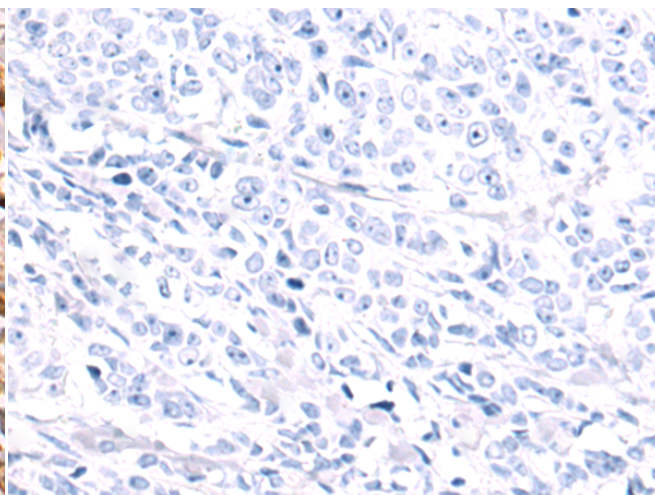
**成分:** PBS (without Mg<sup>2+</sup> and Ca<sup>2+</sup>), pH 7.4, 150 mM NaCl, 0.05% Sodium Azide and 40% glycerol

**研究领域:** Epigenetics and Nuclear Signaling

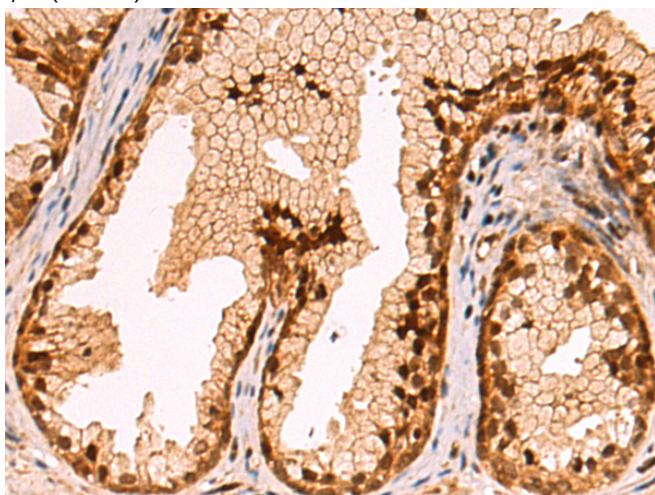
**储存和运输:** Store at -20°C. Avoid repeated freezing and thawing



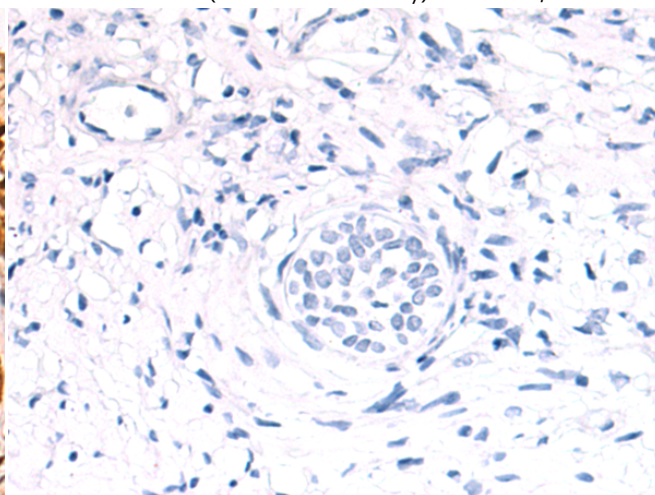
Immunohistochemistry analysis of paraffin embedded Human breast cancer tissue using 219484(ZNF639 Antibody) at a dilution of 1/100(Nucleus).



In comparison with the IHC on the left, the same paraffin-embedded Human breast cancer tissue is first treated with the fusion protein and then with 219484(Anti-ZNF639 Antibody) at dilution 1/100.



The image on the left is immunohistochemistry of paraffin-embedded Human prostate cancer tissue using 219484(Anti-ZNF639 Antibody) at a dilution of 1/100.



In comparison with the IHC on the left, the same paraffin-embedded Human prostate cancer tissue is first treated with fusion protein and then with D227323(Anti-ZNF639 Antibody) at dilution 1/100.



# Product Description

Pioneering GTPase and Oncogene Product Development since 2010

---