

## ZNF420 RABBIT PAB

货号: S221163

产品全名: ZNF420 兔多抗

基因符号: APAK

**UNIPROT ID:** Q8TAQ5 (Gene Accession - NP\_653290)

背景: May be involved in transcriptional regulation.

抗原: Synthetic peptide of human ZNF420

经过测试的应用: ELISA, IHC

推荐稀释比: IHC: Oct-50; ELISA: 1000-2000

种属反应性: Rabbit

克隆性: Rabbit Polyclonal

亚型: Immunogen-specific rabbit IgG

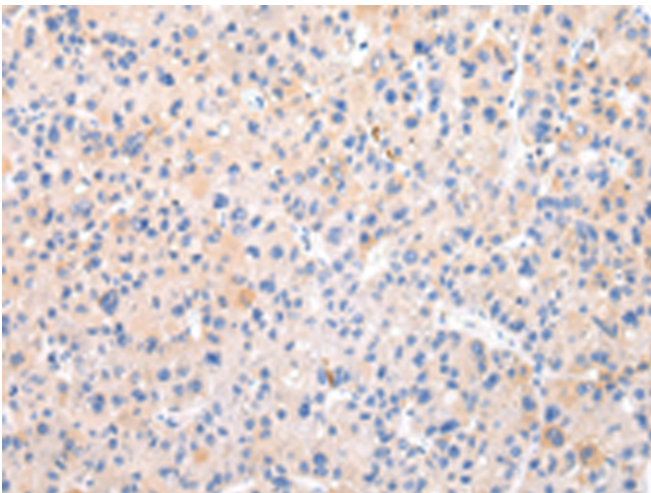
纯化: Antigen affinity purification

种属反应性: Human

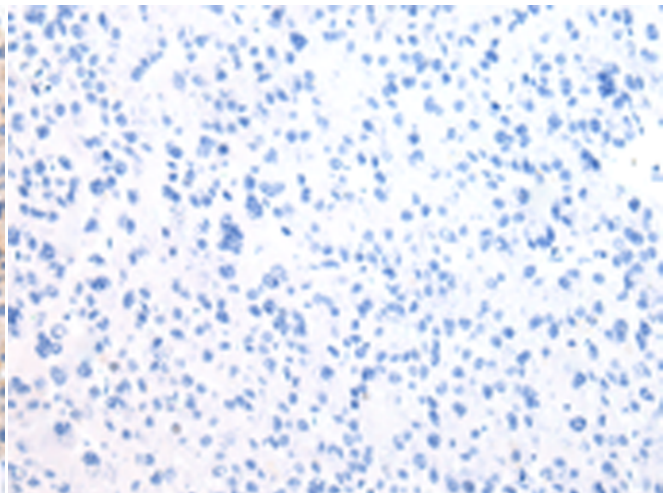
成分: PBS (without Mg<sup>2+</sup> and Ca<sup>2+</sup>), pH 7.4, 150 mM NaCl, 0.05% Sodium Azide and 40% glycerol

研究领域: Epigenetics and Nuclear Signaling, Cancer

储存和运输: Store at -20°C. Avoid repeated freezing and thawing



Immunohistochemistry analysis of paraffin embedded Human liver cancer tissue using 221163 (ZNF420 Antibody) at a dilution of 1/20 (Cytoplasm).



In comparison with the IHC on the left, the same paraffin-embedded Human liver cancer tissue is first treated with the synthetic peptide and then with 221163 (Anti-ZNF420 Antibody) at dilution 1/20.