

ZNF35 RABBIT PAB

货号: S221516

产品全名: ZNF35 兔多抗

基因符号 HF10; HF.10; Zfp105

UNIPROT ID: P13682 (Gene Accession - NP_003411)

背景: May be involved in transcriptional regulation. Involved in cell differentiation and/or proliferation.

抗原: Synthetic peptide of human ZNF35

经过测试的应用: ELISA, IHC

推荐稀释比: IHC: 50-100; ELISA: 5000-10000

种属反应性: Rabbit

克隆性: Rabbit Polyclonal

亚型: Immunogen-specific rabbit IgG

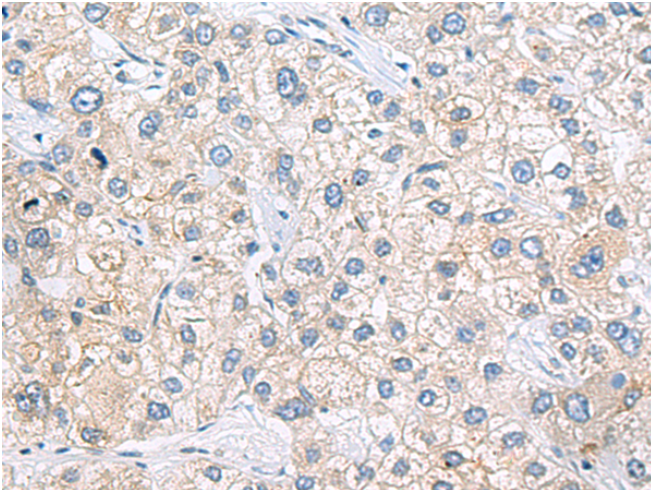
纯化: Antigen affinity purification

种属反应性: Human

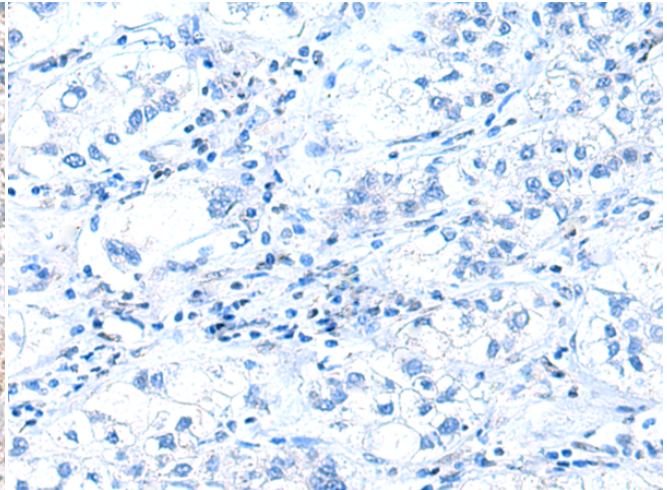
成分: PBS (without Mg²⁺ and Ca²⁺), pH 7.4, 150 mM NaCl, 0.05% Sodium Azide and 40% glycerol

研究领域: Epigenetics and Nuclear Signaling

储存和运输: Store at -20°C. Avoid repeated freezing and thawing



Immunohistochemistry analysis of paraffin embedded Human liver cancer tissue using 221516(ZNF35 Antibody) at a dilution of 1/40(Cytoplasm).



In comparison with the IHC on the left, the same paraffin-embedded Human liver cancer tissue is first treated with the synthetic peptide and then with 221516(Anti-ZNF35 Antibody) at dilution 1/40.