

ZNF24 RABBIT PAB

货号: S218237

产品全名: ZNF24 兔多抗

基因符号: KOX17; RSG-A; ZNF191; ZSCAN3; Zfp191

UNIPROT ID: P17028 (Gene Accession - BC003566)

背景: Transcription factor required for myelination of differentiated oligodendrocytes. Required for the conversion of oligodendrocytes from the premyelinating to the myelinating state. In the developing central nervous system (CNS), involved in the maintenance in the progenitor stage by promoting the cell cycle. Specifically binds to the 5'-TCAT-3' DNA sequence.

抗原: Fusion protein of human ZNF24

经过测试的应用: ELISA, WB, IHC

推荐稀释比: IHC: 50-200;WB: 500-2000;ELISA: 5000-10000

种属反应性: Rabbit

克隆性: Rabbit Polyclonal

亚型: Immunogen-specific rabbit IgG

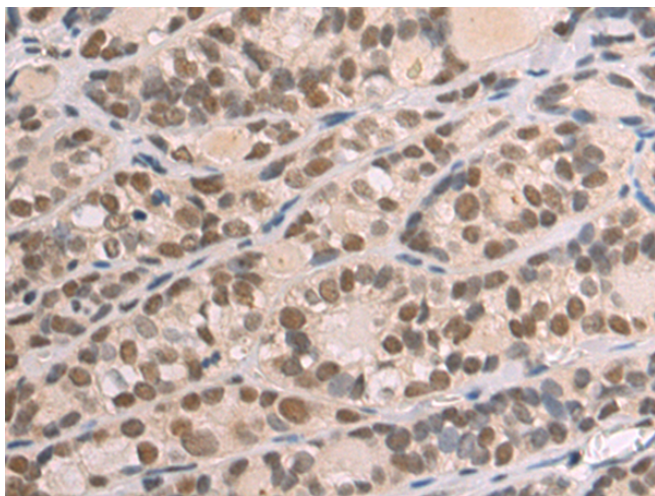
纯化: Antigen affinity purification

种属反应性: Human, Mouse, Rat

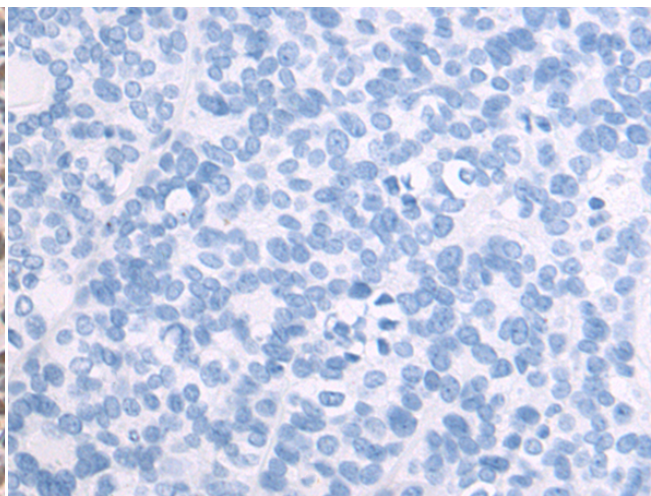
成分: PBS (without Mg²⁺ and Ca²⁺), pH 7.4, 150 mM NaCl, 0.05% Sodium Azide and 40% glycerol

研究领域: Epigenetics and Nuclear Signaling

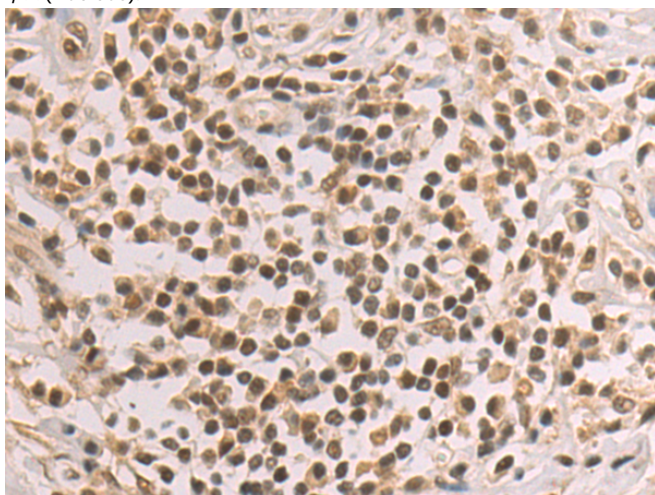
储存和运输: Store at -20°C. Avoid repeated freezing and thawing



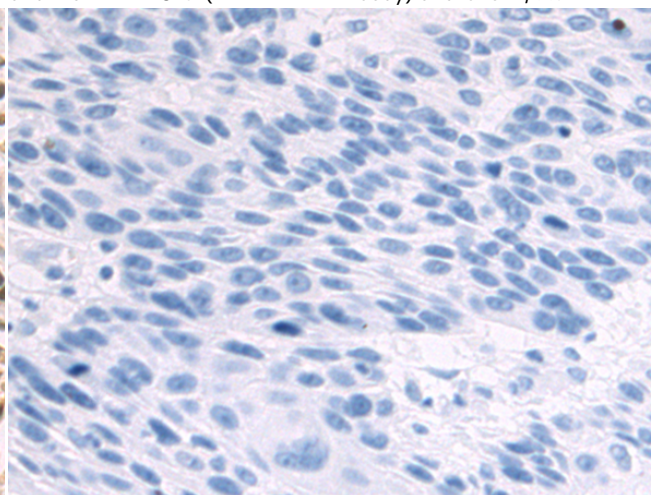
Immunohistochemistry analysis of paraffin embedded Human thyroid cancer tissue using 218237(ZNF24 Antibody) at a dilution of 1/55(Nucleus).



In comparison with the IHC on the left, the same paraffin-embedded Human thyroid cancer tissue is first treated with the fusion protein and then with 218237(Anti-ZNF24 Antibody) at dilution 1/55.

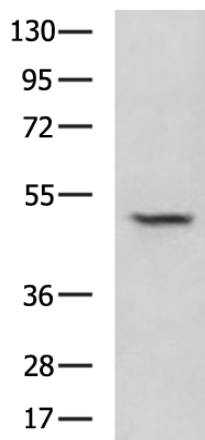


The image on the left is immunohistochemistry of paraffin-embedded Human esophagus cancer tissue using 218237(Anti-ZNF24 Antibody) at a dilution of 1/55.



In comparison with the IHC on the left, the same paraffin-embedded Human esophagus cancer tissue is first treated with fusion protein and then with D224009(Anti-ZNF24 Antibody) at dilution 1/55.

kDa



Gel: 8%SDS-PAGE, Lysate: 40 µg;
Lane: Hela cell lysate;
Primary antibody: 218237(ZNF24 Antibody) at dilution 1/400;
Secondary antibody: HRP-conjugated Goat anti rabbit IgG at 1/5000 dilution;
Exposure time: 10 seconds



Product Description

Pioneering GTPase and Oncogene Product Development since 2010
