

## ZNF200 RABBIT PAB

货号: S214928

产品全名: ZNF200 兔多抗

基因符号

**UNIPROT ID:** P98182 (Gene Accession - NP\_003445)

背景: Could have a role in spermatogenesis.

抗原: Synthetic peptide of human ZNF200

经过测试的应用: ELISA, IHC

推荐稀释比: IHC: 25-100; ELISA: 2000-5000

种属反应性: Rabbit

克隆性: Rabbit Polyclonal

亚型: Immunogen-specific rabbit IgG

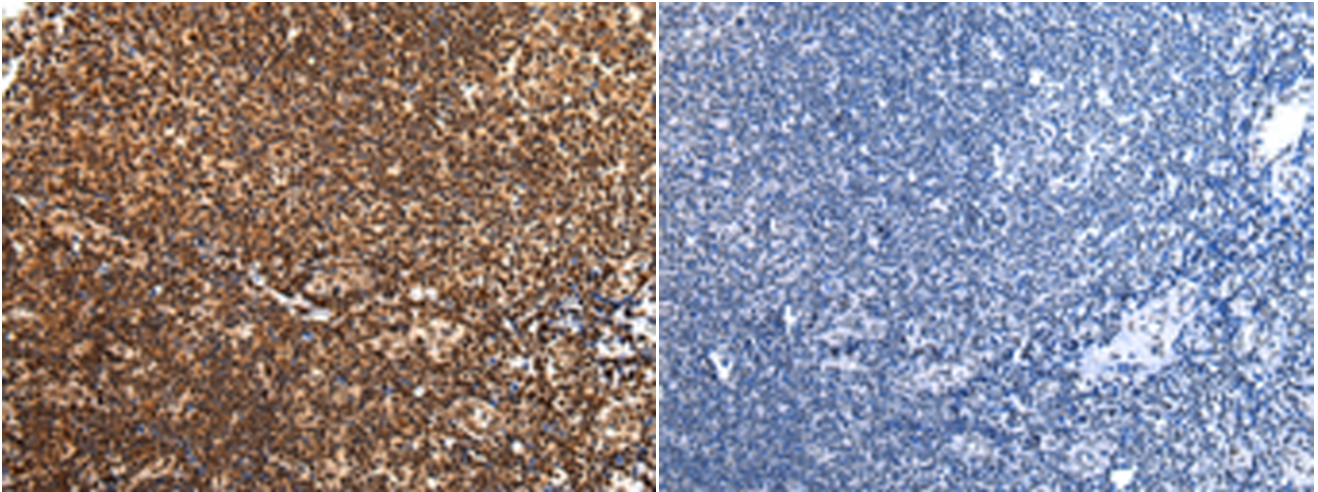
纯化: Antigen affinity purification

种属反应性: Human

成分: PBS (without Mg<sup>2+</sup> and Ca<sup>2+</sup>), pH 7.4, 150 mM NaCl, 0.05% Sodium Azide and 40% glycerol

研究领域: Epigenetics and Nuclear Signaling

储存和运输: Store at -20°C. Avoid repeated freezing and thawing



Immunohistochemistry analysis of paraffin embedded Human tonsil tissue using 214928(ZNF200 Antibody) at a dilution of 1/30(Cytoplasm and Nucleus). In comparison with the IHC on the left, the same paraffin-embedded Human tonsil tissue is first treated with the synthetic peptide and then with 214928(Anti-ZNF200 Antibody) at dilution 1/30.