

ZNF146 RABBIT PAB

货号: S214932

产品全名: ZNF146 兔多抗

基因符号: OZF

UNIPROT ID: Q15072 (Gene Accession - NP_009076)

背景: ZNF146 (zinc finger protein 146), also known as OZF (only zinc finger protein), is a 292 amino acid nuclear protein that binds DNA and belongs to the Krüppel C2H2-type zinc-finger protein family. ZNF146 interacts with UBC9 (ubiquitin carrier protein 9) and RAPI (repressor/activator protein 1 homolog), and is highly expressed in multiple pancreatic and colorectal cancers. Lower levels of expression have been observed in kidney, lung, placenta and brain.

抗原: Synthetic peptide of human ZNF146

经过测试的应用: ELISA, IHC

推荐稀释比: IHC: 25-100; ELISA: 2000-5000

种属反应性: Rabbit

克隆性: Rabbit Polyclonal

亚型: Immunogen-specific rabbit IgG

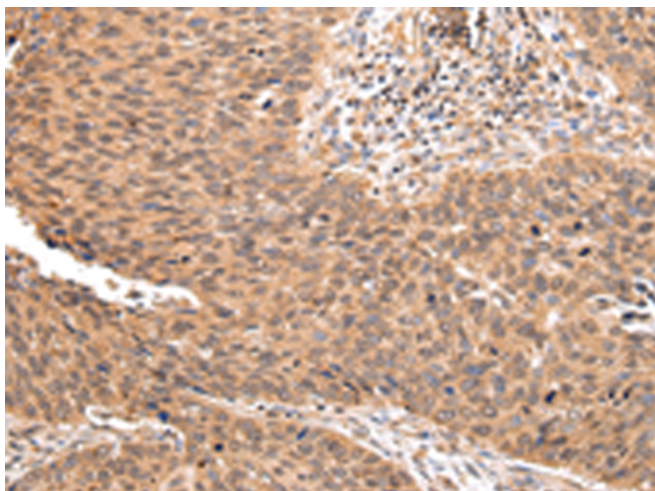
纯化: Antigen affinity purification

种属反应性: Human, Mouse

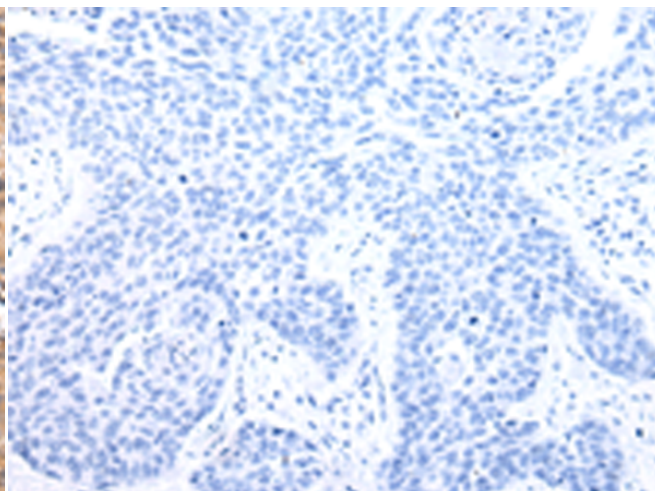
成分: PBS (without Mg²⁺ and Ca²⁺), pH 7.4, 150 mM NaCl, 0.05% Sodium Azide and 40% glycerol

研究领域: Epigenetics and Nuclear Signaling, Cancer

储存和运输: Store at -20°C. Avoid repeated freezing and thawing



Immunohistochemistry analysis of paraffin embedded Human lung cancer tissue using 214932(ZNF146 Antibody) at a dilution of 1/20(Nucleus and Cytoplasm).



In comparison with the IHC on the left, the same paraffin-embedded Human lung cancer tissue is first treated with the synthetic peptide and then with 214932(Anti-ZNF146 Antibody) at dilution 1/20.