

ZNF143 RABBIT PAB

货号: S221515

产品全名: ZNF143 兔多抗

基因符号 SBF; STAF; pHZ-1

UNIPROT ID: P52747 (Gene Accession - NP_003433)

背景: Enables DNA-binding transcription activator activity, RNA polymerase II-specific and RNA polymerase II cis-regulatory region sequence-specific DNA binding activity. Involved in positive regulation of snRNA transcription by RNA polymerase II. Predicted to be located in nucleoplasm. [provided by Alliance of Genome Resources, Apr 2022]

抗原: Synthetic peptide of human ZNF143

经过测试的应用: ELISA, IHC

推荐稀释比: IHC: 50-200; ELISA: 5000-10000

种属反应性: Rabbit

克隆性: Rabbit Polyclonal

亚型: Immunogen-specific rabbit IgG

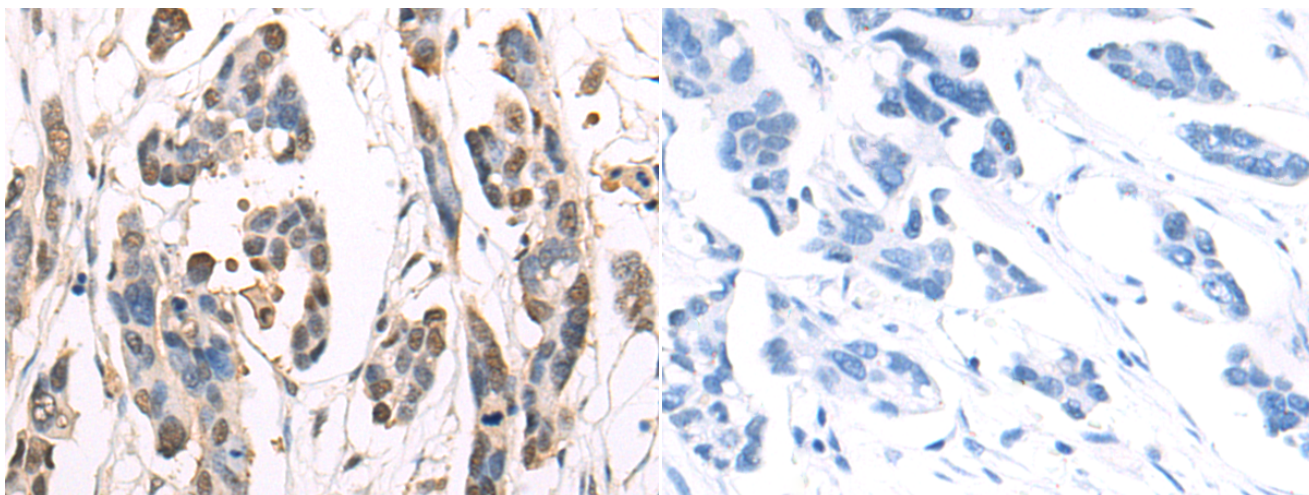
纯化: Antigen affinity purification

种属反应性: Human, Mouse, Rat

成分: PBS (without Mg²⁺ and Ca²⁺), pH 7.4, 150 mM NaCl, 0.05% Sodium Azide and 40% glycerol

研究领域: Epigenetics and Nuclear Signaling

储存和运输: Store at -20°C. Avoid repeated freezing and thawing



Immunohistochemistry analysis of paraffin embedded Human colorectal cancer tissue using 221515(ZNF143 Antibody) at a dilution of 1/50(Nucleus).

In comparison with the IHC on the left, the same paraffin-embedded Human colorectal cancer tissue is first treated with the synthetic peptide and then with 221515(Anti-ZNF143 Antibody) at dilution 1/50.