

## ZIC1 RABBIT PAB

货号: S221513

产品全名: ZIC1 兔多抗

基因符号: ZIC; ZNF201

**UNIPROT ID:** Q15915 (Gene Accession - NP\_003403)

**背景:** This gene encodes a member of the ZIC family of C2H2-type zinc finger proteins. Members of this family are important during development. Aberrant expression of this gene is seen in medulloblastoma, a childhood brain tumor. This gene is closely linked to the gene encoding zinc finger protein of the cerebellum 4, a related family member on chromosome 3. This gene encodes a transcription factor that can bind and transactivate the apolipoprotein E gene.

**抗原:** Synthetic peptide of human ZIC1

**经过测试的应用:** ELISA, IHC

**推荐稀释比:** IHC: 40-250; ELISA: 5000-10000

**种属反应性:** Rabbit

**克隆性:** Rabbit Polyclonal

**亚型:** Immunogen-specific rabbit IgG

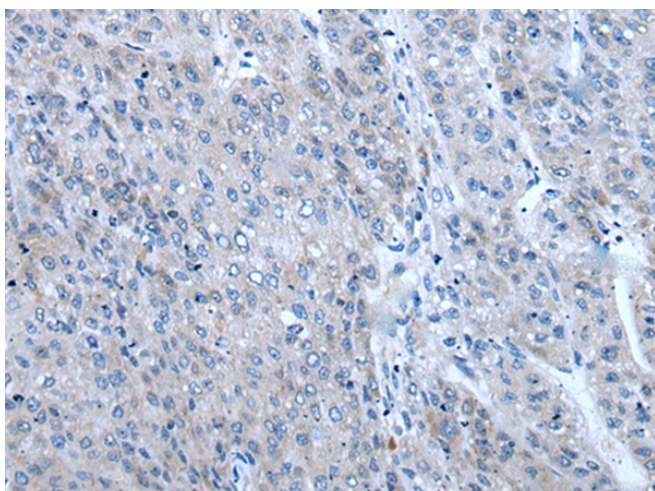
**纯化:** Antigen affinity purification

**种属反应性:** Human, Mouse

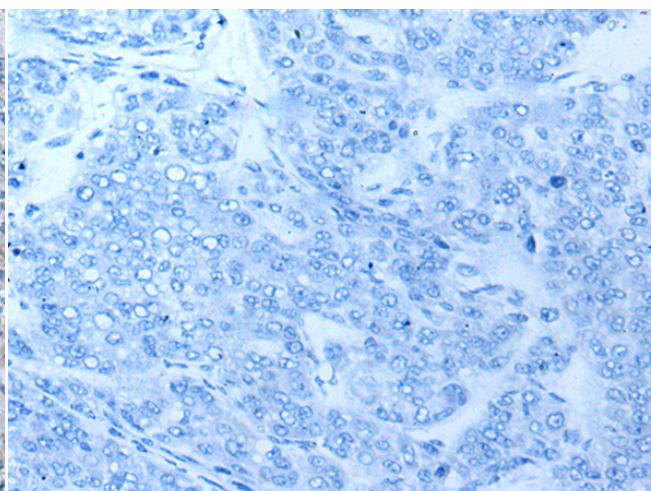
**成分:** PBS (without Mg<sup>2+</sup> and Ca<sup>2+</sup>), pH 7.4, 150 mM NaCl, 0.05% Sodium Azide and 40% glycerol

**研究领域:** Epigenetics and Nuclear Signaling, Neuroscience

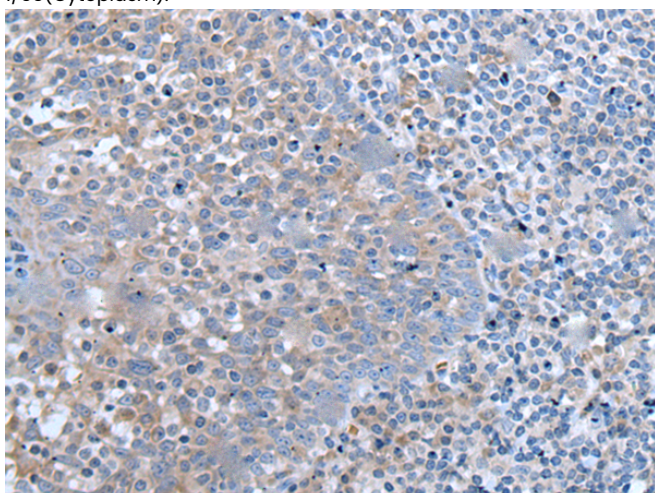
**储存和运输:** Store at -20°C. Avoid repeated freezing and thawing



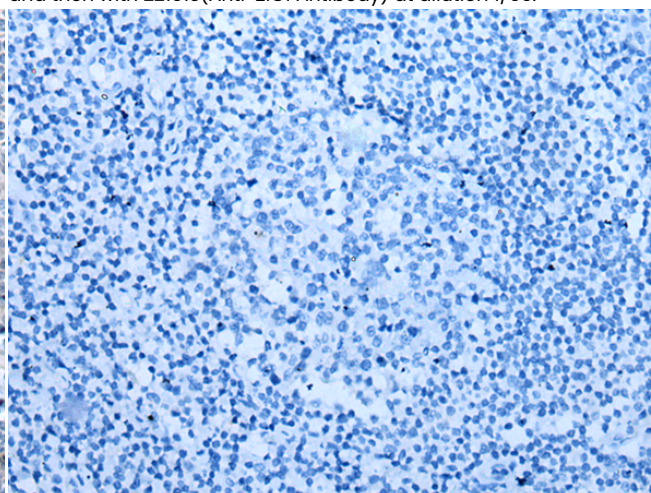
Immunohistochemistry analysis of paraffin embedded Human liver cancer tissue using 221513(ZIC1 Antibody) at a dilution of 1/65(Cytoplasm).



In comparison with the IHC on the left, the same paraffin-embedded Human liver cancer tissue is first treated with the synthetic peptide and then with 221513(Anti-ZIC1 Antibody) at dilution 1/65.



The image on the left is immunohistochemistry of paraffin-embedded Human tonsil tissue using 221513(Anti-ZIC1 Antibody) at a dilution of 1/65.



In comparison with the IHC on the left, the same paraffin-embedded Human tonsil tissue is first treated with synthetic peptide and then with D263139(Anti-ZIC1 Antibody) at dilution 1/65.



# Product Description

Pioneering GTPase and Oncogene Product Development since 2010

---