

ZG16 RABBIT PAB

货号: S212918

产品全名: ZG16 兔多抗

基因符号 JCLN; JCLN1; ZG16A

UNIPROT ID: O60844 (Gene Accession - BC029149)

背景: May play a role in protein trafficking. May act as a linker molecule between the submembranous matrix on the luminal side of zymogen granule membrane (ZGM) and aggregated secretory proteins during granule formation in the TGN.

抗原: Fusion protein of human ZG16

经过测试的应用: ELISA, WB, IHC

推荐稀释比: IHC: 100-300;WB: 1000-5000;ELISA: 5000-10000

种属反应性: Rabbit

克隆性: Rabbit Polyclonal

亚型: Immunogen-specific rabbit IgG

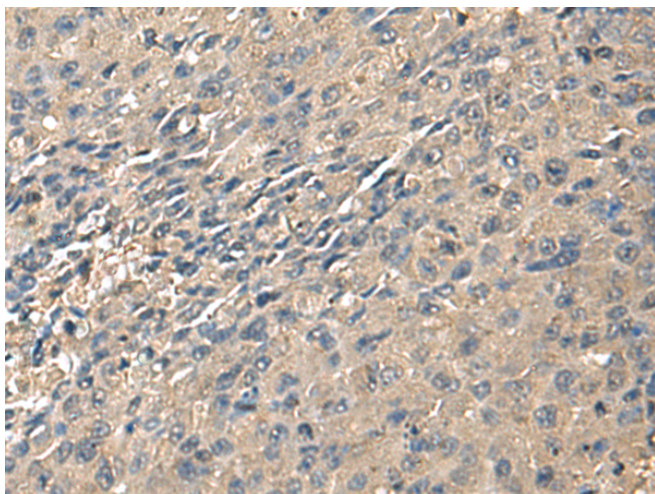
纯化: Antigen affinity purification

种属反应性: Human, Mouse

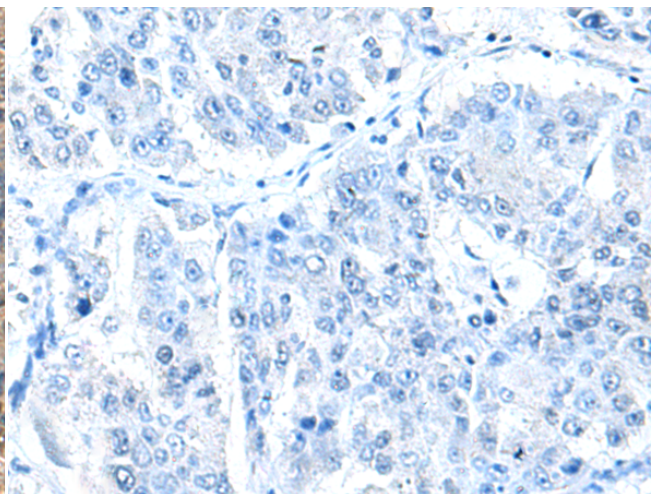
成分: PBS (without Mg²⁺ and Ca²⁺), pH 7.4, 150 mM NaCl, 0.05% Sodium Azide and 40% glycerol

研究领域: Signal Transduction

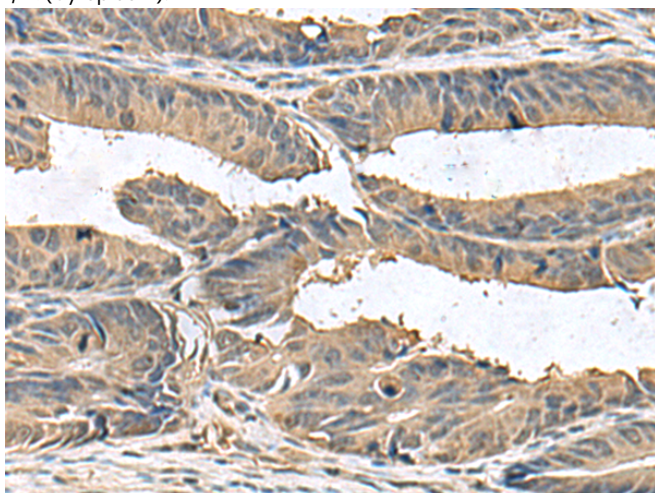
储存和运输: Store at -20°C. Avoid repeated freezing and thawing



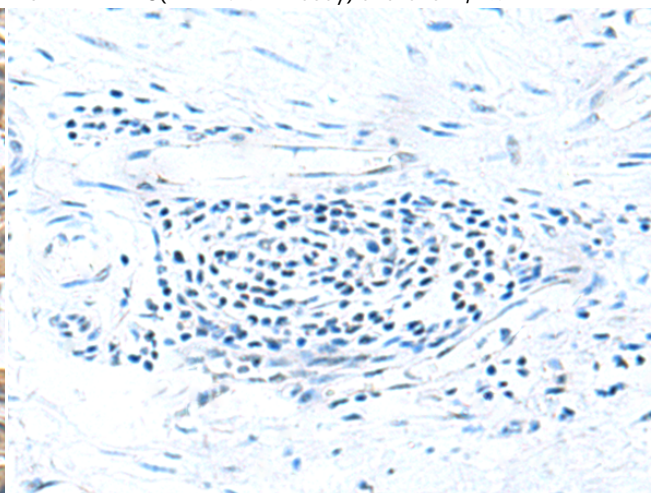
Immunohistochemistry analysis of paraffin embedded Human liver cancer tissue using 212918(ZG16 Antibody) at a dilution of 1/95(Cytoplasm).



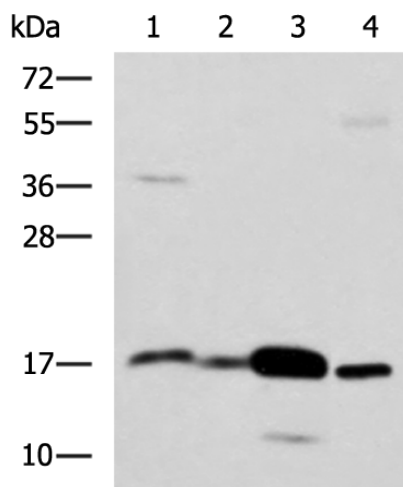
In comparison with the IHC on the left, the same paraffin-embedded Human liver cancer tissue is first treated with the fusion protein and then with 212918(Anti-ZG16 Antibody) at dilution 1/95.



The image on the left is immunohistochemistry of paraffin-embedded Human colorectal cancer tissue using 212918(Anti-ZG16 Antibody) at a dilution of 1/95.



In comparison with the IHC on the left, the same paraffin-embedded Human colorectal cancer tissue is first treated with fusion protein and then with D126078(Anti-ZG16 Antibody) at dilution 1/95.



Gel: 12%SDS-PAGE, Lysate: 40 µg;
 Lane 1-4: Mouse Pancreas tissue, Mouse small intestines tissue,
 Mouse large intestine tissue, Human sigmoid tissue lysates;
 Primary antibody: 212918(ZG16 Antibody) at dilution 1/1350;
 Secondary antibody: HRP-conjugated Goat anti rabbit IgG at 1/5000
 dilution;
 Exposure time: 30 seconds



Product Description

Pioneering GTPase and Oncogene Product Development since 2010
