

ZFP106 RABBIT PAB

货号: N225472

产品全名: ZFP106 兔多抗

基因符号 SH3BP3; ZFP106; ZNF474

UNIPROT ID: Q9H2Y7

背景: RNA-binding protein. Specifically binds to 5'-GGGGCC-3' sequence repeats in RNA. Essential for maintenance of peripheral motor neuron and skeletal muscle function. Required for normal expression and/or alternative splicing of a number of genes in spinal cord and skeletal muscle, including the neurite outgrowth inhibitor RTN4. Also contributes to normal mitochondrial respiratory function in motor neurons, via an unknown mechanism.

抗原: The antiserum was produced against synthesized peptide derived from human ZFP106. AA range:1833-1882

经过测试的应用: WB,ELISA

推荐稀释比: WB: 1/500-1/1000 ELISA: 1/10000

种属反应性: Rabbit

克隆性: Rabbit Polyclonal

分子量: Calculated MW: 209 kDa; Observed MW: 209 kDa

亚型: IgG

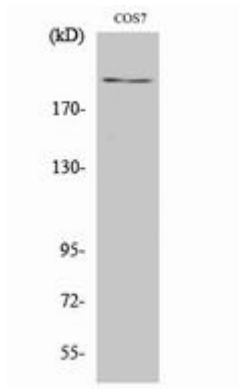
纯化: Affinity Chromatography

种属反应性: Human,Mouse,Monkey

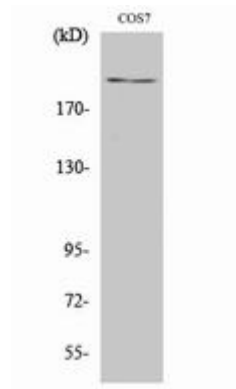
成分: PBS (without Mg²⁺ and Ca²⁺), pH 7.3 containing 50% glycerol, 0.5% BSA and 0.02% sodium azide

研究领域: Epigenetics and Nuclear Signaling

储存和运输: Store at -20°C. Avoid repeated freezing and thawing



Western blot analysis of ZFP106 in COS7 lysates using ZFP106 antibody.



Western blot analysis of ZFP106 in COS7 lysates using ZFP106 antibody.