

ZFAND2B RABBIT PAB

货号: S221154

产品全名: ZFAND2B 兔多抗

基因符号 AIRAPL

UNIPROT ID: Q8WV99 (Gene Accession - NP_620157)

背景: This gene encodes a protein containing ANI-type zinc-fingers and ubiquitin-interacting motifs. The encoded protein likely associates with the proteasome to stimulate the degradation of toxic or misfolded proteins. Alternatively spliced transcript variants encoding multiple isoforms have been observed for this gene.

抗原: Synthetic peptide of human ZFAND2B

经过测试的应用: ELISA, WB, IHC

推荐稀释比: IHC: 50-200;WB: 1000-5000;ELISA: 5000-10000

种属反应性: Rabbit

克隆性: Rabbit Polyclonal

亚型: Immunogen-specific rabbit IgG

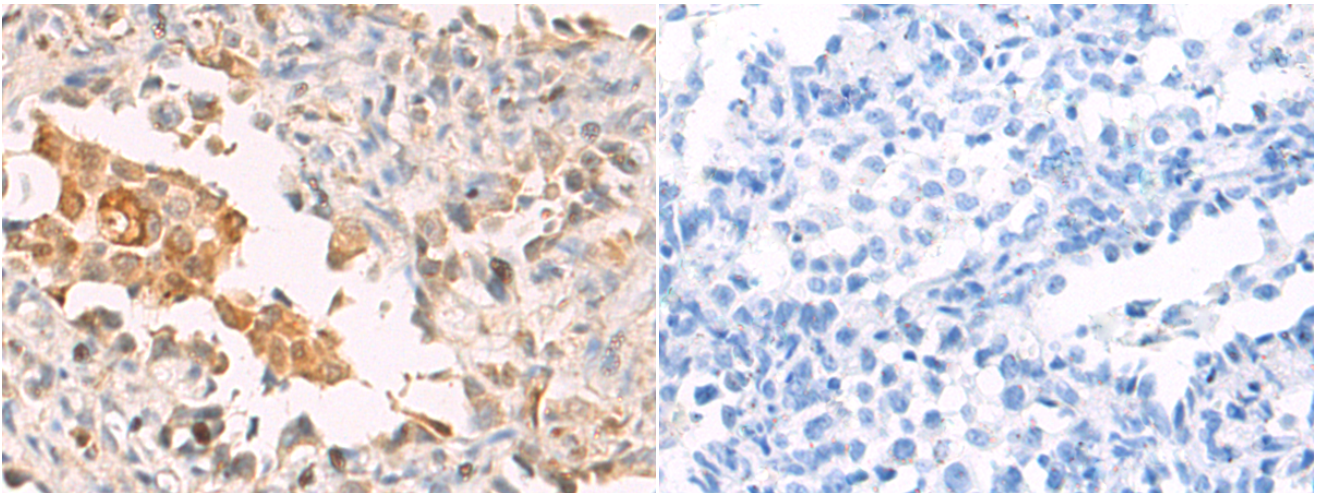
纯化: Antigen affinity purification

种属反应性: Human, Mouse, Rat

成分: PBS (without Mg²⁺ and Ca²⁺), pH 7.4, 150 mM NaCl, 0.05% Sodium Azide and 40% glycerol

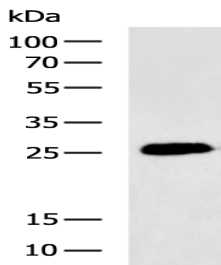
研究领域: Epigenetics and Nuclear Signaling

储存和运输: Store at -20°C. Avoid repeated freezing and thawing



Immunohistochemistry analysis of paraffin embedded Human thyroid cancer tissue using 221154(ZFAND2B Antibody) at a dilution of 1/50(Cytoplasm and Nucleus).

In comparison with the IHC on the left, the same paraffin-embedded Human thyroid cancer tissue is first treated with the synthetic peptide and then with 221154(Anti-ZFAND2B Antibody) at dilution 1/50.



Gel: 12%SDS-PAGE, Lysate: 40 µg;

Lane: A172 cell lysate;

Primary antibody: 221154(ZFAND2B Antibody) at dilution 1/1000;

Secondary antibody: HRP-conjugated Goat anti rabbit IgG at 1/5000 dilution;

Exposure time: 30 seconds