

## ZDHHC20 RABBIT PAB

货号: S218040

产品全名: ZDHHC20 兔多抗

基因符号: DHHC20; DHHC-20; 4933421L13Rik

**UNIPROT ID:** Q5W0Z9 (Gene Accession - BC110517)

**背景:** Enables protein-cysteine S-palmitoyltransferase activity and zinc ion binding activity. Involved in peptidyl-L-cysteine S-palmitoylation. Located in intracellular membrane-bounded organelle and plasma membrane. Is integral component of Golgi membrane. [provided by Alliance of Genome Resources, Apr 2022]

**抗原:** Fusion protein of human ZDHHC20

**经过测试的应用:** ELISA, IHC

**推荐稀释比:** IHC: 150-300; ELISA: 5000-10000

**种属反应性:** Rabbit

**克隆性:** Rabbit Polyclonal

**亚型:** Immunogen-specific rabbit IgG

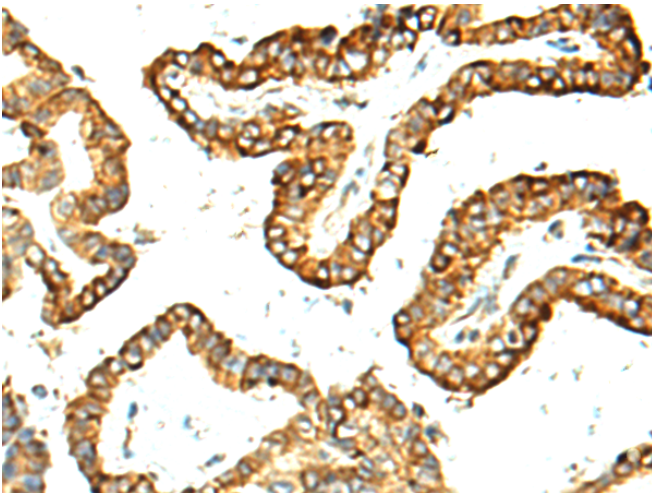
**纯化:** Antigen affinity purification

**种属反应性:** Human, Mouse

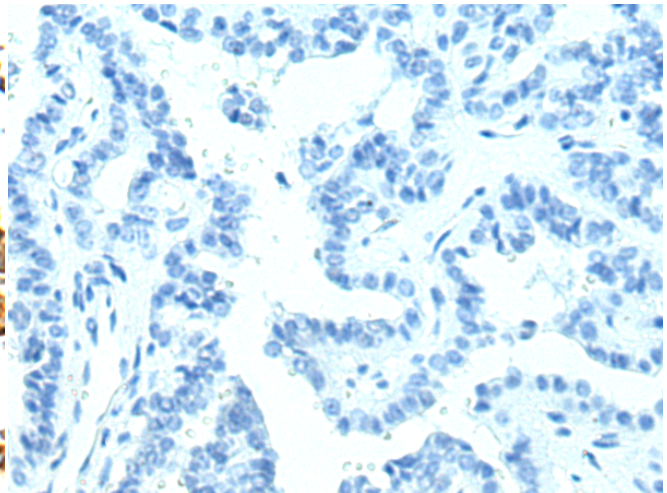
**成分:** PBS (without Mg<sup>2+</sup> and Ca<sup>2+</sup>), pH 7.4, 150 mM NaCl, 0.05% Sodium Azide and 40% glycerol

**研究领域:** Cell Biology

**储存和运输:** Store at -20°C. Avoid repeated freezing and thawing



Immunohistochemistry analysis of paraffin embedded Human thyroid cancer tissue using 218040 (ZDHHC20 Antibody) at a dilution of 1/130 (Cytoplasm and Cell membrane).



In comparison with the IHC on the left, the same paraffin-embedded Human thyroid cancer tissue is first treated with the fusion protein and then with 218040 (Anti-ZDHHC20 Antibody) at dilution 1/130.