

ZC2HC1A RABBIT PAB

货号: S221728

产品全名: ZC2HC1A 兔多抗

基因符号: CGI-62; C8orf70; FAM164A

UNIPROT ID: Q96GY0 (Gene Accession - NP_057094)

背景: The function of this protein remains unknown.

抗原: Synthetic peptide of human ZC2HC1A

经过测试的应用: ELISA, IHC

推荐稀释比: IHC: 25-100; ELISA: 5000-10000

种属反应性: Rabbit

克隆性: Rabbit Polyclonal

亚型: Immunogen-specific rabbit IgG

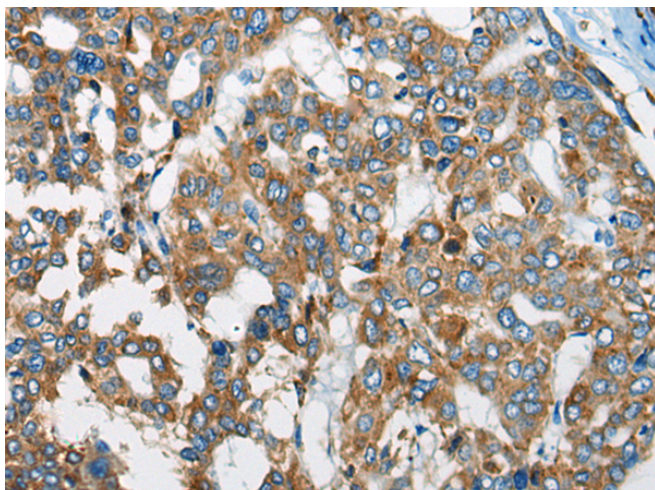
纯化: Antigen affinity purification

种属反应性: Human, Mouse

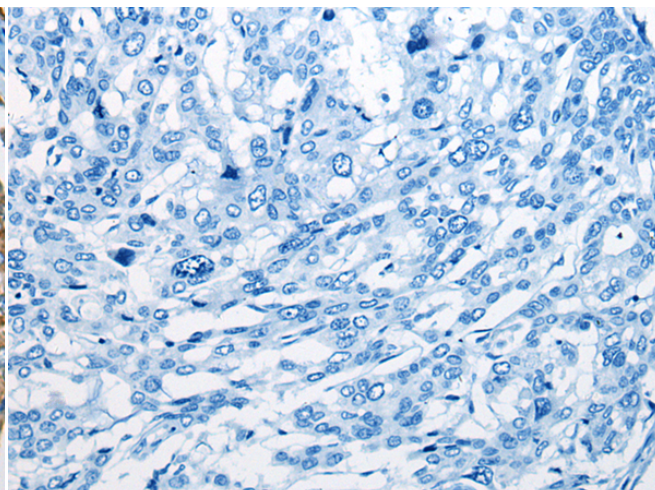
成分: PBS (without Mg²⁺ and Ca²⁺), pH 7.4, 150 mM NaCl, 0.05% Sodium Azide and 40% glycerol

研究领域: Cell Biology

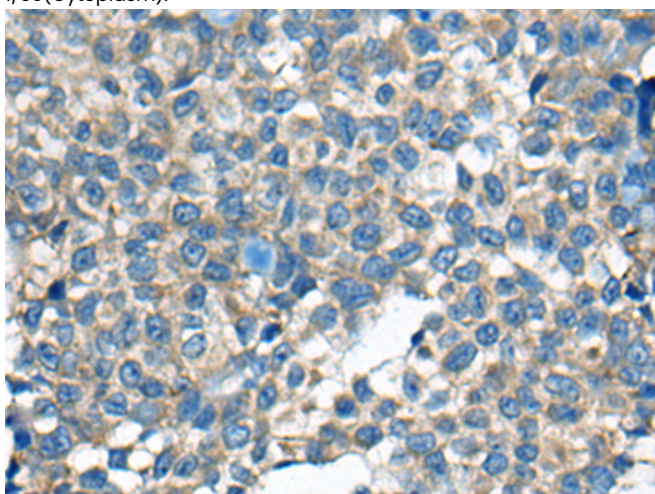
储存和运输: Store at -20°C. Avoid repeated freezing and thawing



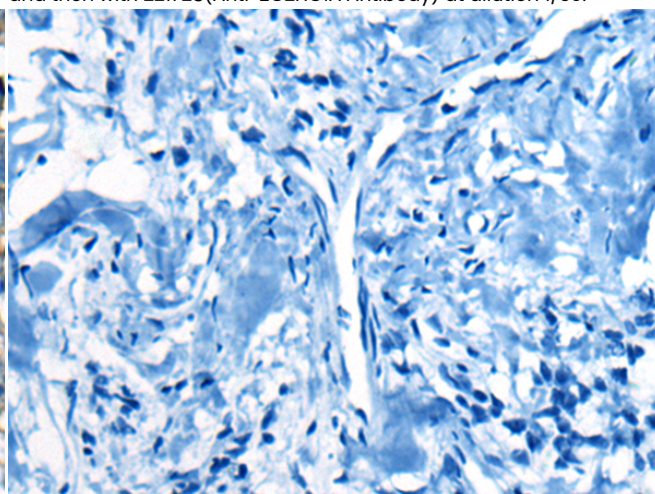
Immunohistochemistry analysis of paraffin embedded Human liver cancer tissue using 221728(ZC2HC1A Antibody) at a dilution of 1/30(Cytoplasm).



In comparison with the IHC on the left, the same paraffin-embedded Human liver cancer tissue is first treated with the synthetic peptide and then with 221728(Anti-ZC2HC1A Antibody) at dilution 1/30.



The image on the left is immunohistochemistry of paraffin-embedded Human ovarian cancer tissue using 221728(Anti-ZC2HC1A Antibody) at a dilution of 1/30.



In comparison with the IHC on the left, the same paraffin-embedded Human ovarian cancer tissue is first treated with synthetic peptide and then with D263442(Anti-ZC2HC1A Antibody) at dilution 1/30.



Product Description

Pioneering GTPase and Oncogene Product Development since 2010
