

ZBTB8A RABBIT PAB

货号: S218698

产品全名: ZBTB8A 兔多抗

基因符号: BOZFI; ZBTB8; ZNF916A

UNIPROT ID: Q96BR9 (Gene Accession - BC015239)

背景: May be involved in transcriptional regulation.

抗原: Fusion protein of human ZBTB8A

经过测试的应用: ELISA, WB, IHC

推荐稀释比: IHC: 50-300;WB: 500-2000;ELISA: 5000-10000

种属反应性: Rabbit

克隆性: Rabbit Polyclonal

亚型: Immunogen-specific rabbit IgG

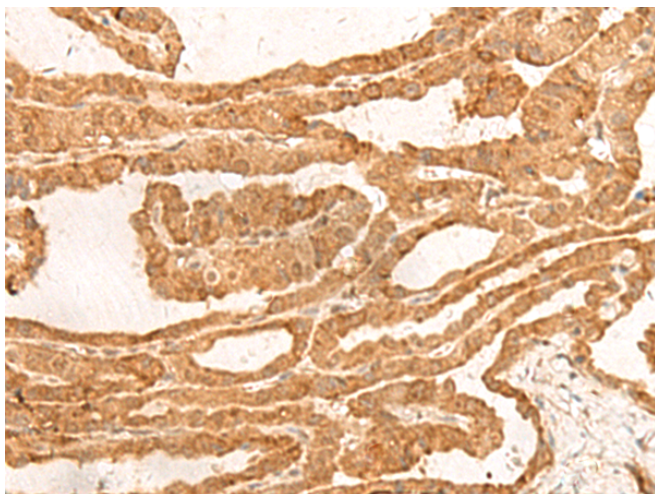
纯化: Antigen affinity purification

种属反应性: Human, Mouse, Rat

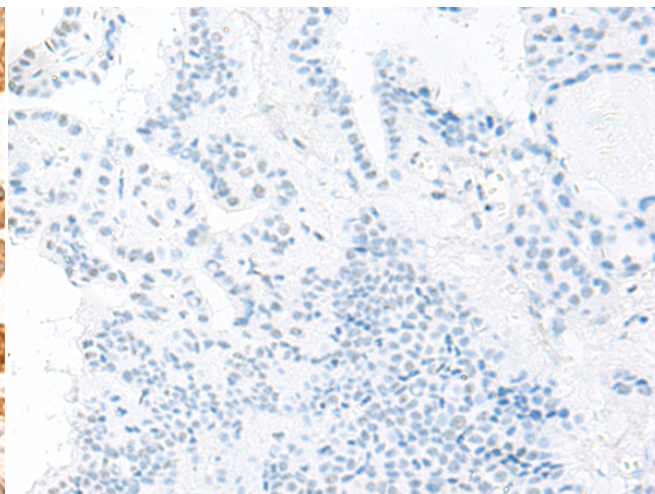
成分: PBS (without Mg²⁺ and Ca²⁺), pH 7.4, 150 mM NaCl, 0.05% Sodium Azide and 40% glycerol

研究领域: Epigenetics and Nuclear Signaling

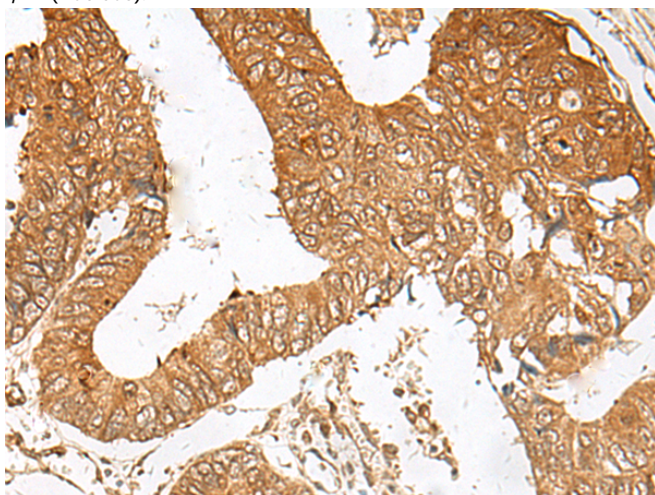
储存和运输: Store at -20°C. Avoid repeated freezing and thawing



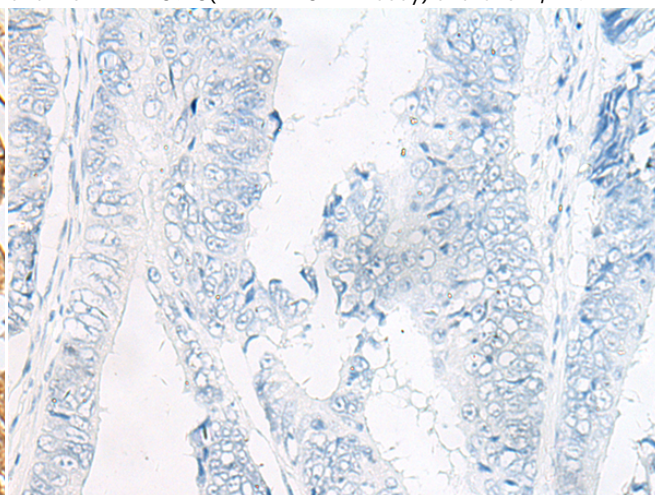
Immunohistochemistry analysis of paraffin embedded Human thyroid cancer tissue using 218698(ZBTB8A Antibody) at a dilution of 1/100(Nucleus).



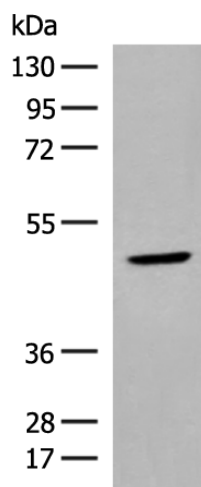
In comparison with the IHC on the left, the same paraffin-embedded Human thyroid cancer tissue is first treated with the fusion protein and then with 218698(Anti-ZBTB8A Antibody) at dilution 1/100.



The image on the left is immunohistochemistry of paraffin-embedded Human colorectal cancer tissue using 218698(Anti-ZBTB8A Antibody) at a dilution of 1/100.



In comparison with the IHC on the left, the same paraffin-embedded Human colorectal cancer tissue is first treated with fusion protein and then with D224987(Anti-ZBTB8A Antibody) at dilution 1/100.



Gel: 8%SDS-PAGE, Lysate: 40 µg;
Lane: Human thyroid tissue lysate;
Primary antibody: 218698(ZBTB8A Antibody) at dilution 1/350;
Secondary antibody: Goat anti rabbit IgG at 1/8000 dilution;
Exposure time: 15 seconds



Product Description

Pioneering GTPase and Oncogene Product Development since 2010
