

## ZBTB7A RABBIT MAB

货号: N263613

产品全名: ZBTB7A 兔单克隆抗体

基因符号 FBI1; LRF; Pokemon; TIP21; ZBTB7; ZBTB7A; ZNF857A

**UNIPROT ID:** O95365

背景: Plays a key role in the instruction of early lymphoid progenitors to develop into B lineage by repressing T-cell instructive Notch signals (By similarity).

抗原: A synthetic peptide of human ZBTB7A

经过测试的应用: WB,IHC-F,IHC-P,ICC/IF,IP

推荐稀释比: WB: 1/500-1/1000 IHC: 1/50-1/100 IF: 1/50-1/200 IP: 1/20

种属反应性: Rabbit

克隆性: Rabbit Monoclonal

克隆编号: R07-5E0

分子量: Calculated MW: 61 kDa; Observed MW: 61 kDa

亚型: IgG

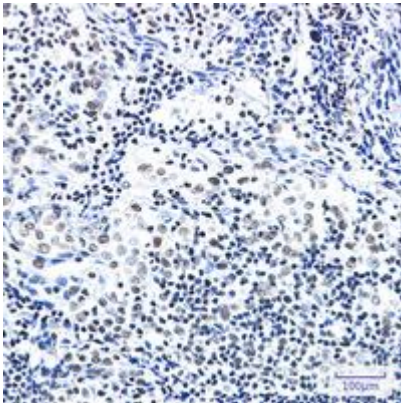
纯化: Affinity Purified

种属反应性: Human

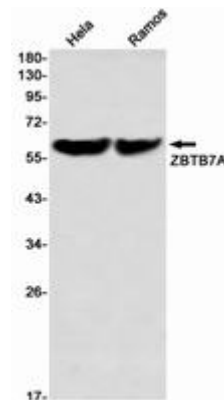
成分: PBS (without Mg<sup>2+</sup> and Ca<sup>2+</sup>), pH 7.3 containing 50% glycerol, 0.5% BSA and 0.02% sodium azide

研究领域: Epigenetics and Nuclear Signaling

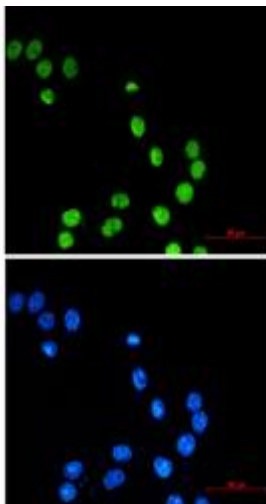
储存和运输: Store at -20°C. Avoid repeated freezing and thawing



Immunohistochemistry analysis of paraffin-embedded Human tonsil using ZBTB7A antibody. High-pressure and temperature Sodium Citrate pH 6.0 was used for antigen retrieval.



Western blot analysis of ZBTB7A in HeLa, Ramos lysates using ZBTB7A antibody.



Immunocytochemistry analysis of ZBTB7A (green) in MCF-7 using ZBTB7A antibody, and DAPI (blue)