

## ZBTB6 ? RABBIT PAB

货号: S213319

产品全名: ZBTB6 兔多抗

基因符号 ZID; ZNF482

**UNIPROT ID:** Q15916 (Gene Accession - NP\_006617)

**背景:** The ZBTB6 protein contains a conserved N-terminal domain known as the POZ domain that inhibits DNA binding. Sequence analysis predicted that the 424-amino acid protein contains 4 C-terminal zinc finger motifs and an N-terminal domain of 120 amino acids found in many different zinc finger proteins and a group of non-zinc finger poxvirus proteins.

**抗原:** Synthetic peptide of human ZBTB6

**经过测试的应用:** ELISA, IHC

**推荐稀释比:** IHC: 50-200; ELISA: 2000-5000

**种属反应性:** Rabbit

**克隆性:** Rabbit Polyclonal

**亚型:** Immunogen-specific rabbit IgG

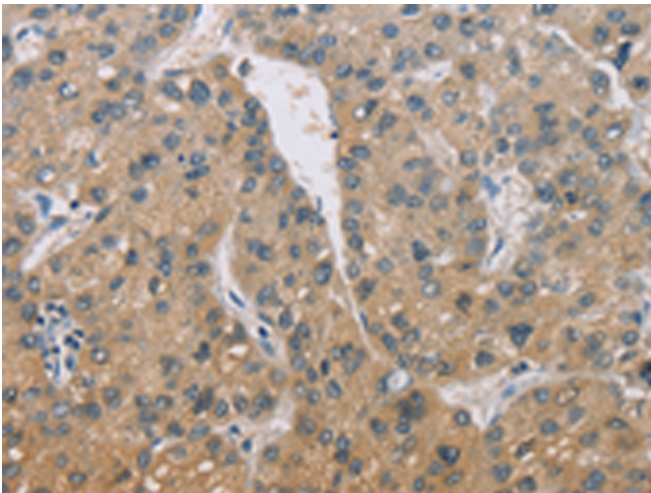
**纯化:** Antigen affinity purification

**种属反应性:** Human, Mouse

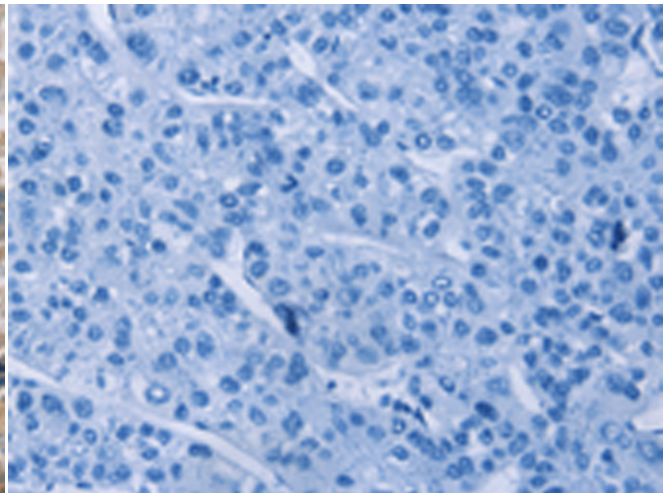
**成分:** PBS (without Mg<sup>2+</sup> and Ca<sup>2+</sup>), pH 7.4, 150 mM NaCl, 0.05% Sodium Azide and 40% glycerol

**研究领域:** Epigenetics and Nuclear Signaling

**储存和运输:** Store at -20°C. Avoid repeated freezing and thawing



Immunohistochemistry analysis of paraffin embedded Human liver cancer tissue using 213319(ZBTB6 Antibody) at a dilution of 1/50(Cytoplasm).



In comparison with the IHC on the left, the same paraffin-embedded Human liver cancer tissue is first treated with the synthetic peptide and then with 213319(Anti-ZBTB6 Antibody) at dilution 1/50.