

## ZBTB3 RABBIT PAB

货号: S221507

产品全名: ZBTB3 兔多抗

基因符号

**UNIPROT ID:** Q9H5J0 (Gene Accession - NP\_079060)

**背景:** The BTB (Broad-Complex, Tramtrack and Bric a brac) domain, also known as the POZ (POxvirus and Zinc finger) domain, is an N-terminal homodimerization domain that contains multiple copies of kelch repeats and/or C2H2-type zinc fingers. Proteins that contain BTB domains are thought to be involved in transcriptional regulation via control of chromatin structure and function. ZBTB3 (zinc finger and BTB domain containing 3) is a 574 amino acid protein that contains one BTB (POZ) domain and two C2H2-type zinc fingers. Localized to the nucleus, ZBTB3 is thought to play a role in transcriptional regulation events. The gene encoding ZBTB3 maps to human chromosome 11, which houses over 1,400 genes and comprises nearly 4% of the human genome.

**抗原:** Synthetic peptide of human ZBTB3

**经过测试的应用:** ELISA, WB, IHC

**推荐稀释比:** IHC: 35-200;WB: 500-2000;ELISA: 5000-10000

**种属反应性:** Rabbit

**克隆性:** Rabbit Polyclonal

**亚型:** Immunogen-specific rabbit IgG

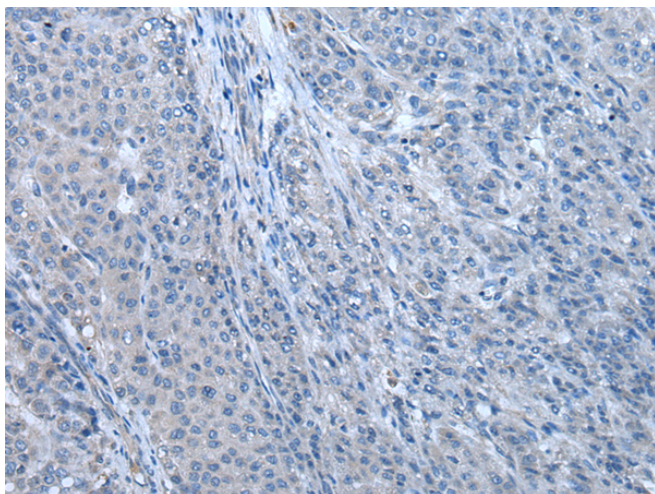
**纯化:** Antigen affinity purification

**种属反应性:** Human, Mouse

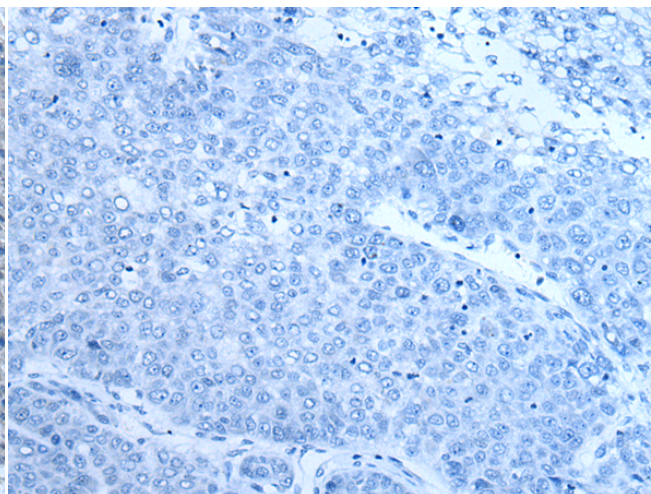
**成分:** PBS (without Mg<sup>2+</sup> and Ca<sup>2+</sup>), pH 7.4, 150 mM NaCl, 0.05% Sodium Azide and 40% glycerol

**研究领域:** Epigenetics and Nuclear Signaling

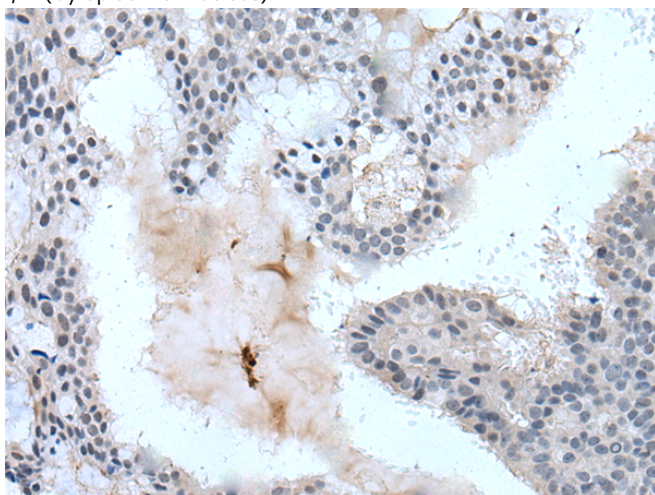
**储存和运输:** Store at -20°C. Avoid repeated freezing and thawing



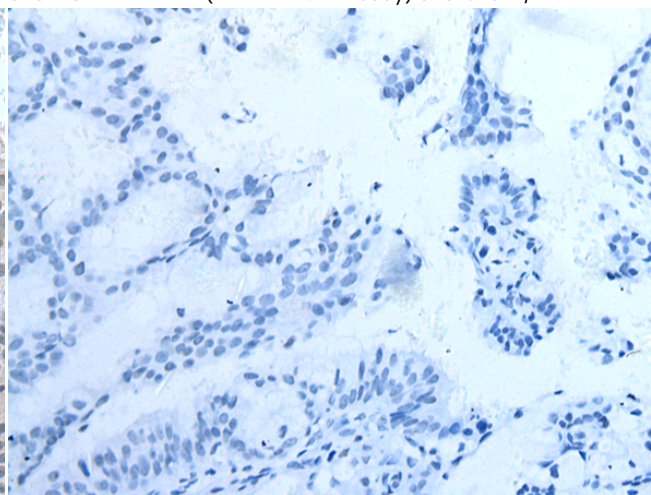
Immunohistochemistry analysis of paraffin embedded Human liver cancer tissue using 221507(ZBTB3 Antibody) at a dilution of 1/55(Cytoplasm or Nucleus).



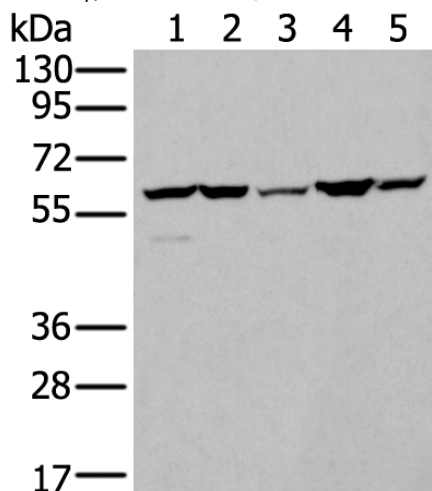
In comparison with the IHC on the left, the same paraffin-embedded Human liver cancer tissue is first treated with the synthetic peptide and then with 221507(Anti-ZBTB3 Antibody) at dilution 1/55.



The image on the left is immunohistochemistry of paraffin-embedded Human breast cancer tissue using 221507(Anti-ZBTB3 Antibody) at a dilution of 1/55.



In comparison with the IHC on the left, the same paraffin-embedded Human breast cancer tissue is first treated with synthetic peptide and then with D263133(Anti-ZBTB3 Antibody) at dilution 1/55.



Gel: 8%SDS-PAGE, Lysate: 40 µg;  
Lane 1-5: A549, A172, HT-29, HEPG2 and Hela cell lysates;  
Primary antibody: 221507(ZBTB3 Antibody) at dilution 1/550;  
Secondary antibody: Goat anti rabbit IgG at 1/8000 dilution;  
Exposure time: 30 seconds



# Product Description

Pioneering GTPase and Oncogene Product Development since 2010

---