

ZBTB2 RABBIT PAB

货号: S214924

产品全名: ZBTB2 兔多抗

基因符号: ZNF437

UNIPROT ID: Q8N680 (Gene Accession - NP_065912)

背景: ZBTB2 is a 514 amino acid nuclear protein that contains one BTB (POZ) domain and 4 C2H2-type zinc fingers. ZBTB25, also known as ZNF46 or KUP, is a 435 amino acid nuclear protein that is expressed mainly in hematopoietic cells and testis and contains one BTB (POZ) domain and 2 C2H2-type zinc fingers.

抗原: Synthetic peptide of human ZBTB2

经过测试的应用: ELISA, IHC

推荐稀释比: IHC: 30-150; ELISA: 2000-10000

种属反应性: Rabbit

克隆性: Rabbit Polyclonal

亚型: Immunogen-specific rabbit IgG

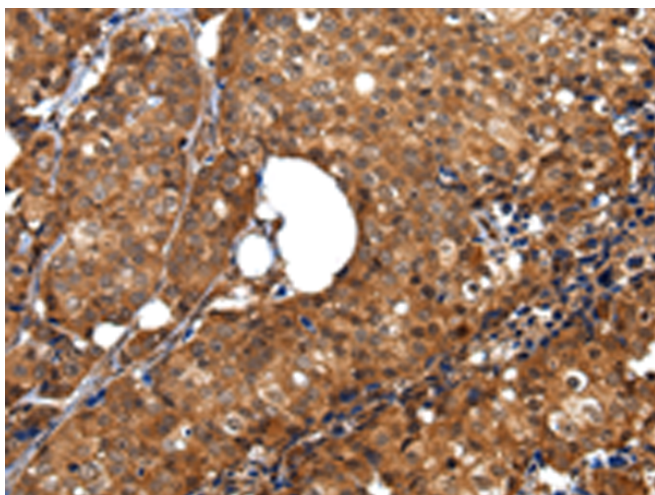
纯化: Antigen affinity purification

种属反应性: Human

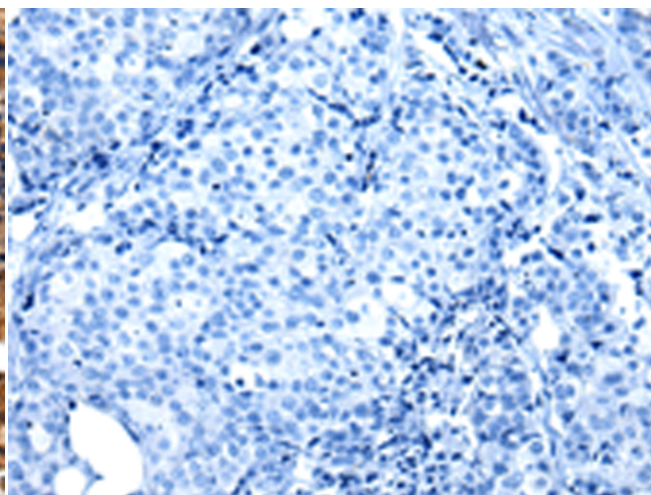
成分: PBS (without Mg²⁺ and Ca²⁺), pH 7.4, 150 mM NaCl, 0.05% Sodium Azide and 40% glycerol

研究领域: Epigenetics and Nuclear Signaling, Cancer

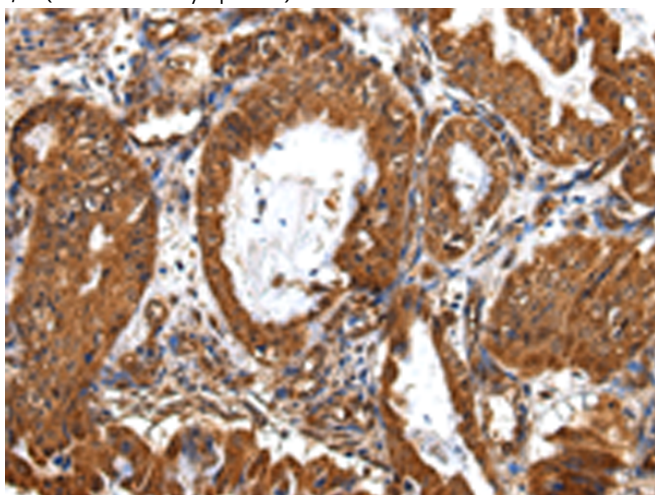
储存和运输: Store at -20°C. Avoid repeated freezing and thawing



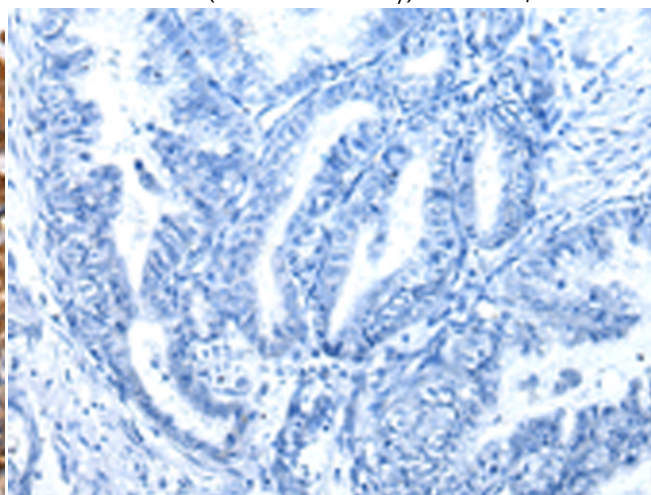
Immunohistochemistry analysis of paraffin embedded Human breast cancer tissue using 214924(ZBTB2 Antibody) at a dilution of 1/40(Nucleus and Cytoplasm).



In comparison with the IHC on the left, the same paraffin-embedded Human breast cancer tissue is first treated with the synthetic peptide and then with 214924(Anti-ZBTB2 Antibody) at dilution 1/40.



The image on the left is immunohistochemistry of paraffin-embedded Human esophagus cancer tissue using 214924(Anti-ZBTB2 Antibody) at a dilution of 1/40.



In comparison with the IHC on the left, the same paraffin-embedded Human esophagus cancer tissue is first treated with synthetic peptide and then with D162628(Anti-ZBTB2 Antibody) at dilution 1/40.



Product Description

Pioneering GTPase and Oncogene Product Development since 2010
