

## ZBTB1 ? RABBIT PAB

货号: S213313

产品全名: ZBTB1 兔多抗

基因符号 ZNF909

**UNIPROT ID:** Q9Y2K1 (Gene Accession - NP\_001116801)

**背景:** The BTB (Broad-Complex, Tramtrack and Bric a brac) domain, also known as the POZ (Poxvirus and Zinc finger) domain, is an N-terminal homodimerization domain that contains multiple copies of kelch repeats and/or C2H2-type zinc fingers. Proteins that contain BTB domains are thought to be involved in transcriptional regulation via control of chromatin structure and function. ZBTB1 (zinc finger and BTB domain containing 1), also known as KIAA0997, is a 713 amino acid nuclear protein that contains one BTB (POZ) domain and 8 C2H2-type zinc fingers.

**抗原:** Synthetic peptide of human ZBTB1

**经过测试的应用:** ELISA, WB, IHC

**推荐稀释比:** IHC: 25-100;WB: 1000-5000;ELISA: 2000-10000

**种属反应性:** Rabbit

**克隆性:** Rabbit Polyclonal

**亚型:** Immunogen-specific rabbit IgG

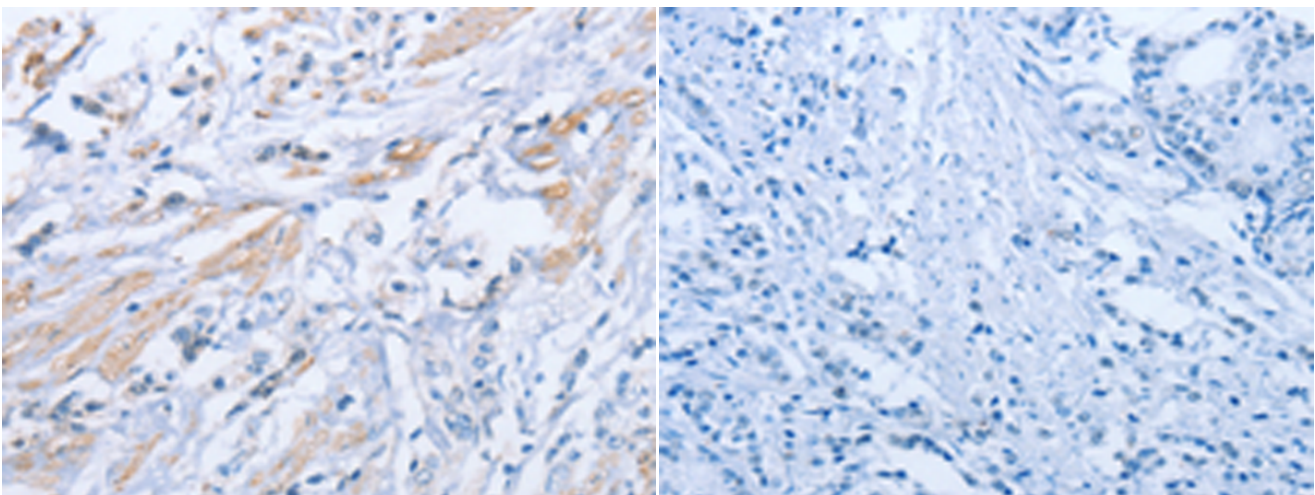
**纯化:** Antigen affinity purification

**种属反应性:** Human, Mouse

**成分:** PBS (without Mg<sup>2+</sup> and Ca<sup>2+</sup>), pH 7.4, 150 mM NaCl, 0.05% Sodium Azide and 40% glycerol

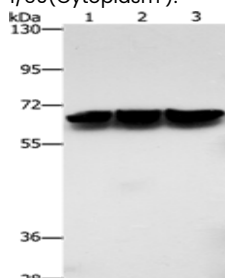
**研究领域:** Epigenetics and Nuclear Signaling

**储存和运输:** Store at -20°C. Avoid repeated freezing and thawing



Immunohistochemistry analysis of paraffin embedded Human prostate cancer tissue using 213313(ZBTB1 Antibody) at a dilution of 1/50(Cytoplasm ).

In comparison with the IHC on the left, the same paraffin-embedded Human prostate cancer tissue is first treated with the synthetic peptide and then with 213313(Anti-ZBTB1 Antibody) at dilution 1/50.



Gel: 8%SDS-PAGE, Lysate: 40 µg;

Lane 1-3: Jurkat cells, hela cells, mouse brain tissue;

Primary antibody: 213313(ZBTB1 Antibody) at dilution 1/500;

Secondary antibody: Goat anti rabbit IgG at 1/8000 dilution;

Exposure time: 5 seconds