

YY1 RABBIT PAB

货号: S211783

产品全名: YY1 兔多抗

基因符号 DELTA; NF-E1; UCRBP; GADEV5; INO80S; YIN-YANG-1

UNIPROT ID: P25490 (Gene Accession - BC037308)

背景: YY1 is a ubiquitously distributed transcription factor belonging to the GLI-Kruppel class of zinc finger proteins. The protein is involved in repressing and activating a diverse number of promoters. YY1 may direct histone deacetylases and histone acetyltransferases to a promoter in order to activate or repress the promoter, thus implicating histone modification in the function of YY1.

抗原: Fusion protein of human YY1

经过测试的应用: ELISA, WB, IHC

推荐稀释比: IHC: 50-200;WB: 1000-5000;ELISA: 5000-10000

种属反应性: Rabbit

克隆性: Rabbit Polyclonal

亚型: Immunogen-specific rabbit IgG

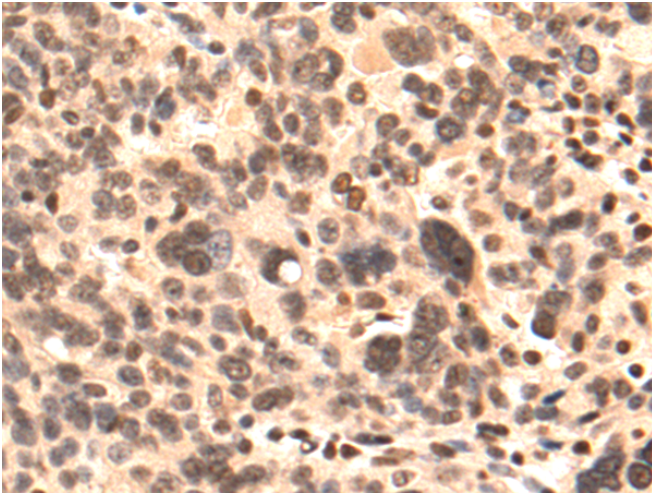
纯化: Antigen affinity purification

种属反应性: Human, Mouse

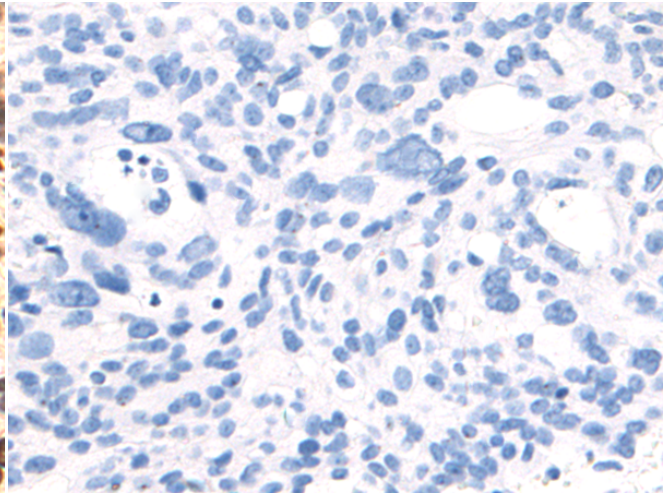
成分: PBS (without Mg²⁺ and Ca²⁺), pH 7.4, 150 mM NaCl, 0.05% Sodium Azide and 40% glycerol

研究领域: Epigenetics and Nuclear Signaling, Neuroscience

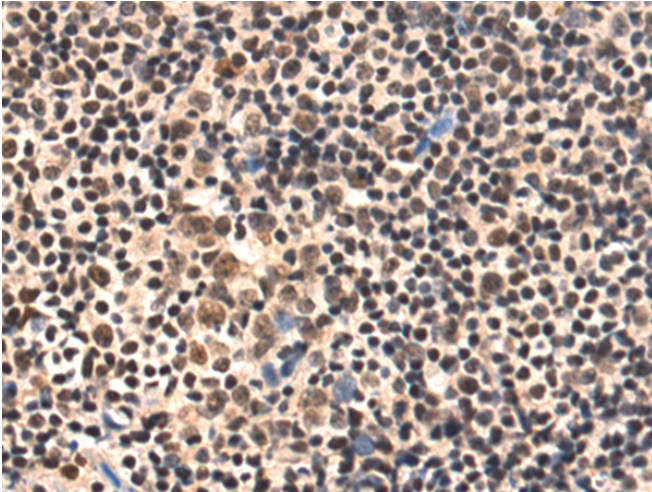
储存和运输: Store at -20°C. Avoid repeated freezing and thawing



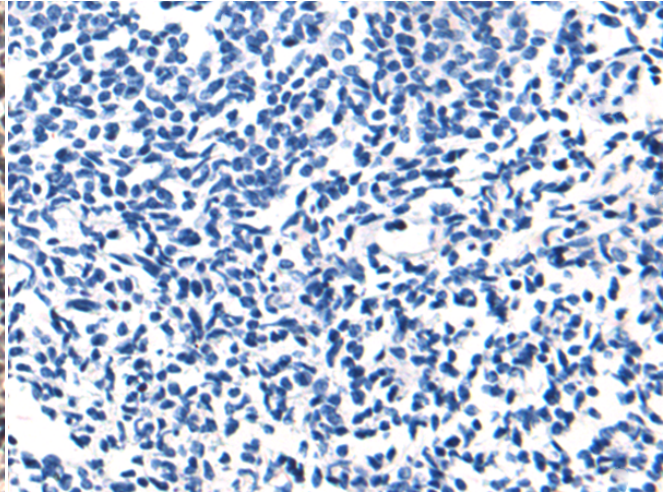
Immunohistochemistry analysis of paraffin embedded Human breast cancer tissue using 211783 (YY1 Antibody) at a dilution of 1/80 (Nucleus).



In comparison with the IHC on the left, the same paraffin-embedded Human breast cancer tissue is first treated with the fusion protein and then with 211783 (Anti-YY1 Antibody) at dilution 1/80.

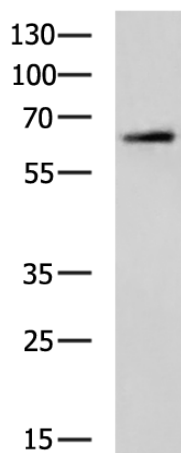


The image on the left is immunohistochemistry of paraffin-embedded Human tonsil tissue using 211783 (Anti-YY1 Antibody) at a dilution of 1/80.



In comparison with the IHC on the left, the same paraffin-embedded Human tonsil tissue is first treated with fusion protein and then with D123590 (Anti-YY1 Antibody) at dilution 1/80.

kDa



Gel: 8% SDS-PAGE, Lysate: 40 µg;
Lane: 293T cell lysate;
Primary antibody: 211783 (YY1 Antibody) at dilution 1/1150;
Secondary antibody: HRP-conjugated Goat anti rabbit IgG at 1/5000 dilution;
Exposure time: 3 seconds



Product Description

Pioneering GTPase and Oncogene Product Development since 2010
