

## YY1 RABBIT PAB

货号: N225572

产品全名: YY1 兔多抗

基因符号 YY1; Delta transcription factor; INO80 complex subunit S; NF-E1; Yin and yang 1; YY-1

**UNIPROT ID:** P25490

**背景:** Its activity is regulated by transcription factors and cytoplasmic proteins that have been shown to abrogate or completely inhibit YY1-mediated activation or repression. For example, it acts as a repressor in absence of adenovirus E1A protein but as an activator in its presence. Acts synergistically with the SMAD1 and SMAD4 in bone morphogenetic protein (BMP)-mediated cardiac-specific gene expression.

**抗原:** A synthesized peptide derived from human YY1

**经过测试的应用:** WB,IHC-P,ICC/IF,IP

**推荐稀释比:** WB: 1/500-1/1000 IHC: 1/50-1/100 IF: 1/50-1/200 IP: 1/20

**种属反应性:** Rabbit

**克隆性:** Rabbit Polyclonal

**分子量:** Calculated MW: 45 kDa; Observed MW: 68 kDa

**亚型:** IgG

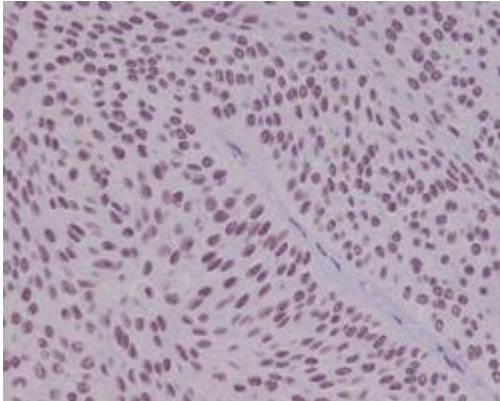
**纯化:** Affinity Chromatography

**种属反应性:** Human, Mouse and Rat

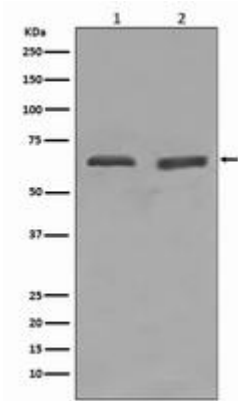
**成分:** PBS (without Mg<sup>2+</sup> and Ca<sup>2+</sup>), pH 7.3 containing 50% glycerol, 0.5% BSA and 0.02% sodium azide

**研究领域:** Epigenetics and Nuclear Signaling

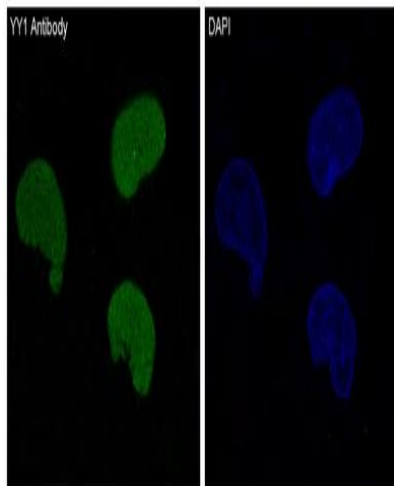
**储存和运输:** Store at -20°C. Avoid repeated freezing and thawing



Immunohistochemistry analysis of paraffin-embedded Human bladder using YY1 antibody. High-pressure and temperature Sodium Citrate pH 6.0 was used for antigen retrieval.



Western blot analysis of YY1 in (1) HeLa lysates; (2) Daudi lysates using YY1 antibody.



Immunofluorescence analysis of YY1 in HeLa using YY1 antibody.