

YWHAG RABBIT PAB

货号: S219936

产品全名: YWHAG 兔多抗

基因符号 14-3-3GAMMA

UNIPROT ID: P61981 (Gene Accession - NP_036611)

背景: This gene product belongs to the 14-3-3 family of proteins which mediate signal transduction by binding to phosphoserine-containing proteins. This highly conserved protein family is found in both plants and mammals, and this protein is 100% identical to the rat ortholog. It is induced by growth factors in human vascular smooth muscle cells, and is also highly expressed in skeletal and heart muscles, suggesting an important role for this protein in muscle tissue. It has been shown to interact with RAF1 and protein kinase C, proteins involved in various signal transduction pathways.

抗原: Synthetic peptide of human YWHAG

经过测试的应用: ELISA, WB, IHC

推荐稀释比: IHC: 50-200;WB: 1000-5000;ELISA: 2000-10000

种属反应性: Rabbit

克隆性: Rabbit Polyclonal

亚型: Immunogen-specific rabbit IgG

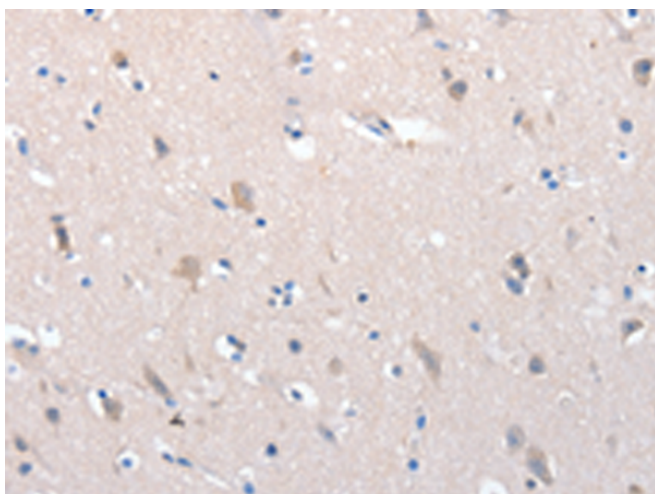
纯化: Antigen affinity purification

种属反应性: Human, Mouse, Rat

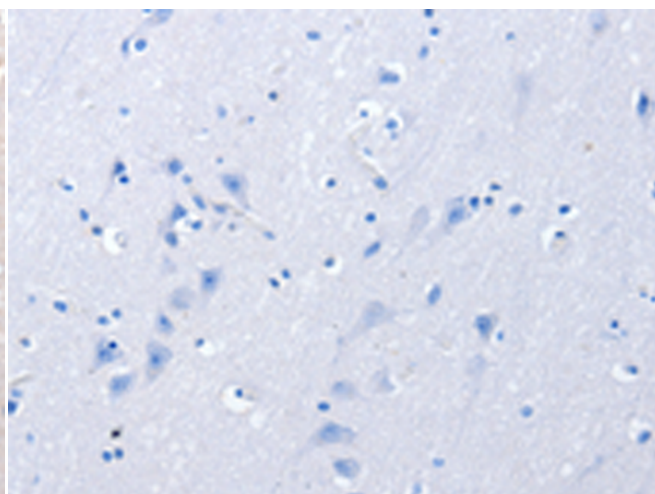
成分: PBS (without Mg²⁺ and Ca²⁺), pH 7.4, 150 mM NaCl, 0.05% Sodium Azide and 40% glycerol

研究领域: Signal Transduction, Cancer, Neuroscience

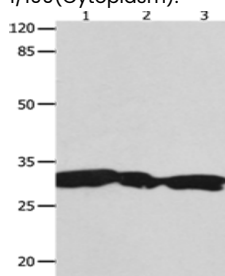
储存和运输: Store at -20°C. Avoid repeated freezing and thawing



Immunohistochemistry analysis of paraffin embedded Human brain tissue using 219936 (YWHAG Antibody) at a dilution of 1/100 (Cytoplasm).



In comparison with the IHC on the left, the same paraffin-embedded Human brain tissue is first treated with the synthetic peptide and then with 219936 (Anti-YWHAG Antibody) at dilution 1/100.



Gel: 10%SDS-PAGE, Lysate: 40 µg;

Lane 1-3: HeLa cells, 293T cells, Jurkat cells;

Primary antibody: 219936 (YWHAG Antibody) at dilution 1/1800;

Secondary antibody: Goat anti rabbit IgG at 1/8000 dilution;

Exposure time: 10 seconds