

## YWHAE RABBIT PAB

货号: S219934

产品全名: YWHAE 兔多抗

基因符号 MDS, MDCR, KCIP-1, 14-3-3E

**UNIPROT ID:** P62258 (Gene Accession - NP\_006752)

**背景:** This gene product belongs to the 14-3-3 family of proteins which mediate signal transduction by binding to phosphoserine-containing proteins. This highly conserved protein family is found in both plants and mammals, and this protein is 100% identical to the mouse ortholog. It interacts with CDC25 phosphatases, RAF1 and IRS1 proteins, suggesting its role in diverse biochemical activities related to signal transduction, such as cell division and regulation of insulin sensitivity. It has also been implicated in the pathogenesis of small cell lung cancer. Two transcript variants, one protein-coding and the other non-protein-coding, have been found for this gene.

**抗原:** Synthetic peptide of human YWHAE

**经过测试的应用:** ELISA, WB, IHC

**推荐稀释比:** IHC: 100-300;WB: 1000-5000;ELISA: 2000-10000

**种属反应性:** Rabbit

**克隆性:** Rabbit Polyclonal

**亚型:** Immunogen-specific rabbit IgG

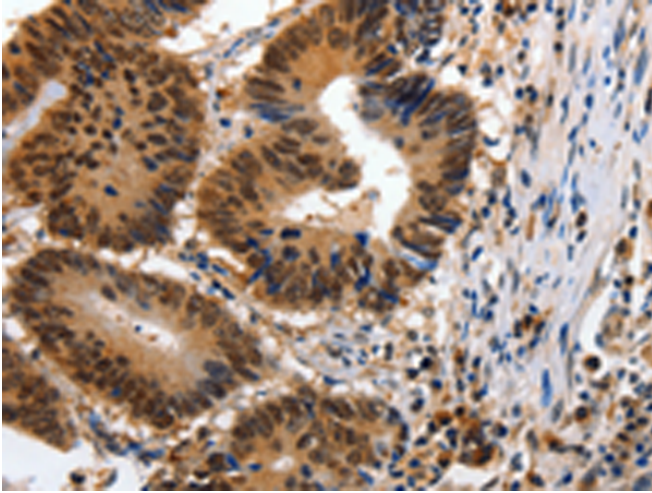
**纯化:** Antigen affinity purification

**种属反应性:** Human, Mouse, Rat

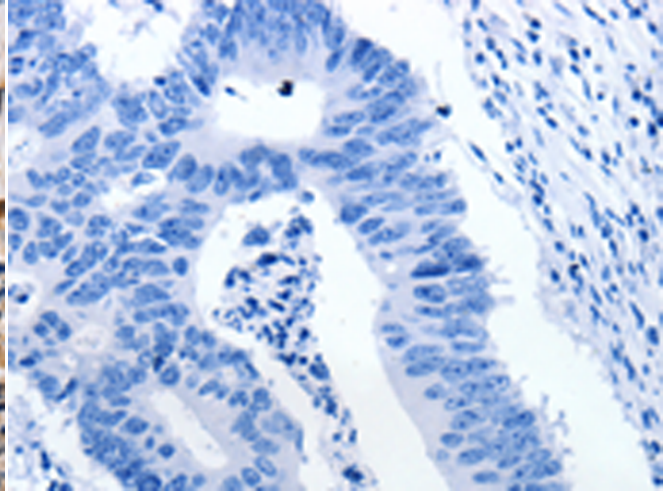
**成分:** PBS (without Mg<sup>2+</sup> and Ca<sup>2+</sup>), pH 7.4, 150 mM NaCl, 0.05% Sodium Azide and 40% glycerol

**研究领域:** Signal Transduction, Neuroscience

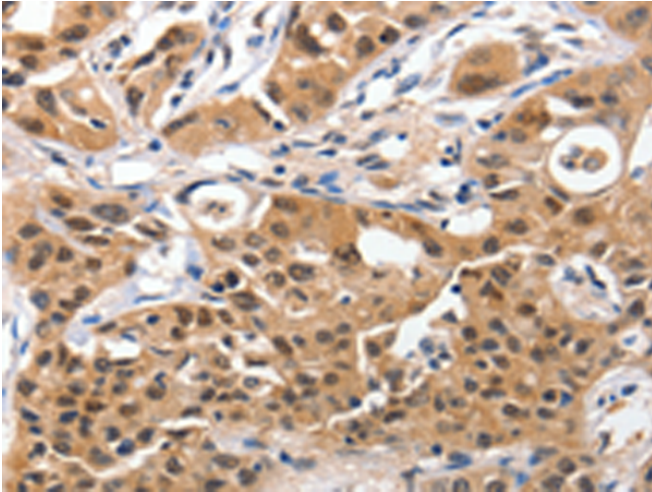
**储存和运输:** Store at -20°C. Avoid repeated freezing and thawing



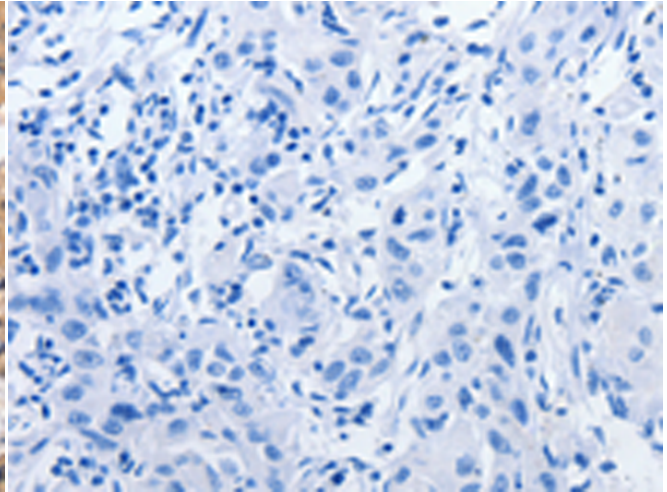
Immunohistochemistry analysis of paraffin embedded Human colon cancer tissue using 219934(YWHAE Antibody) at a dilution of 1/100(Cytoplasm, Nucleus).



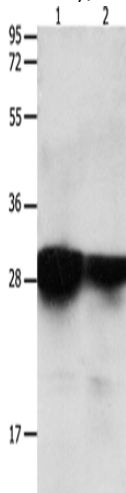
In comparison with the IHC on the left, the same paraffin-embedded Human colon cancer tissue is first treated with the synthetic peptide and then with 219934(Anti-YWHAE Antibody) at dilution 1/100.



The image on the left is immunohistochemistry of paraffin-embedded Human lung cancer tissue using 219934(Anti-YWHAE Antibody) at a dilution of 1/100.



In comparison with the IHC on the left, the same paraffin-embedded Human lung cancer tissue is first treated with synthetic peptide and then with D260651(Anti-YWHAE Antibody) at dilution 1/100.



Gel: 12%SDS-PAGE, Lysate: 40 µg;  
Lane 1-2: Human brain malignant glioma tissue, Human laryngocarcinoma tissue;  
Primary antibody: 219934(YWHAE Antibody) at dilution 1/2200;  
Secondary antibody: Goat anti rabbit IgG at 1/8000 dilution;  
Exposure time: 30 seconds



# Product Description

Pioneering GTPase and Oncogene Product Development since 2010

---